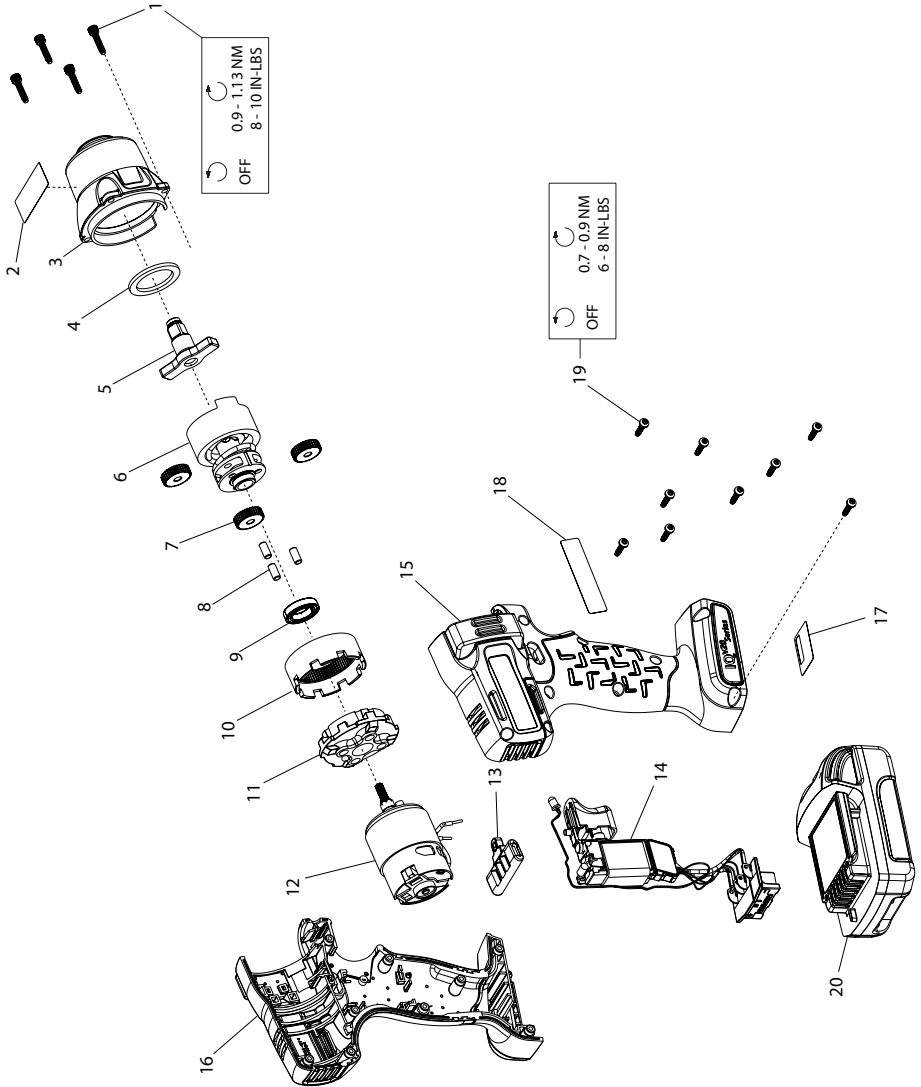


W5000 Series Cordless Impact Wrench - Exploded View



(Dwg. 48617021)



W5000 Series Cordless Impact Wrench - Parts List

Item	Part Description	Part Number
*	Hammer Case Kit	
	For W5130	W5130-K727
	For W5150	W5150-K727
1	Screw, Hammer Case (4 Required)	---
2	Warning Label	---
3	Hammer Case Assembly	---
4	Nylon Washer	---
5	Anvil Kit	
	For W5130	W5130-K626
	For W5150	W5150-K626
6	Impact Mechanism Kit	W5130-K724
*	Planetary Gear Kit	W5130-K37
7	Planet Gear (3 Required)	---
8	Pin (3 Required)	---
9	Bearing, Gear Carrier	---
10	Ring Gear	---
11	Ring Gear Holder	---
12	Electric Motor Kit	W5130-K54
13	Forward/Reverse Actuator	W7150-K75
14	Trigger & Battery Connector Kit	W5130-K93
*	Housing Kit	W5130-K40
15	Right Housing	---
16	Left Housing	---
17	Serial Number Label	---
18	Information Label	---
19	Screw, Housing (9 Required)	---
*†	Fastener Kit	W5130-K105
*‡	Label Kit	
	For W5130	W5130-K99
	For W5150	W5150-K99
*20	20V Li-Ion Battery Pack	
	1.5 Ah "Thin Pack"	BL2005
	3.0 Ah "Full Capacity Pack"(Not Illustrated)	BL2010
*21	Carrying Case	W5000-CASE
*22	Protective Boot	W5130-BOOT

* Not illustrated

†Includes Items 1 and 19

‡Includes Items 2, 17 and 18

Parts and Maintenance

When the life of the tool has expired, it is recommended that the tool be disassembled, degreased and parts be separated by material so that they can be recycled.

Tool repair and maintenance should only be carried out by an authorized Service Center.

Refer all communications to the nearest **Ingersoll Rand** Office or Distributor.

Related Documentation

For additional information refer to:

Cordless Impact Wrench Product Safety Information Manual 04581146.

Cordless Impact Wrench Product Information Manual 48383970.

Manuals can be downloaded from www.ingersollrandproducts.com

