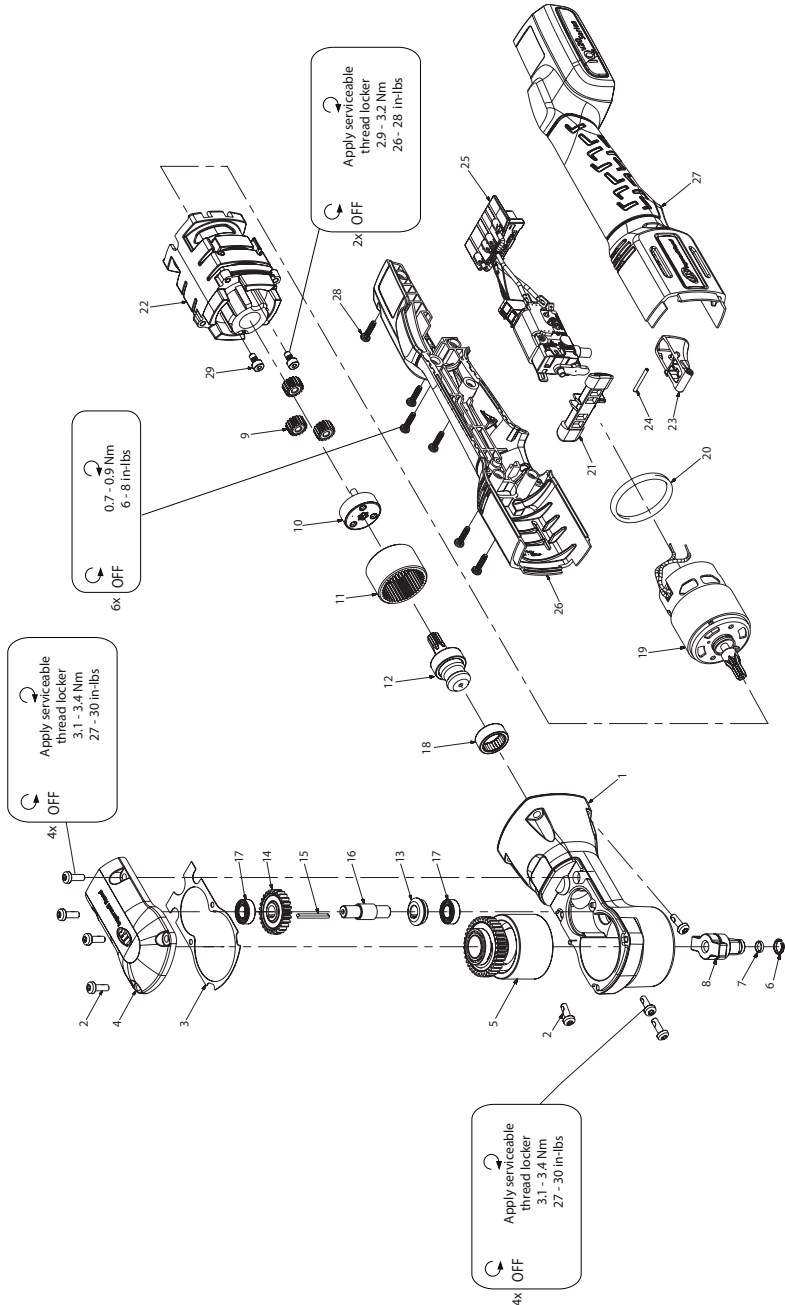


W5300 Series, Cordless Impact Angle Wrench - Exploded View



W5300 Series, Cordless Impact Angle Wrench - Parts List

| Item | Part Description | Part Number | Item | Part Description | Part Number |
|------|------------------------------------|--------------|------|--|--------------|
| * | Angle Head Kit | W5330-K550B | 3 | Gasket, Cover | W5330-K36 |
| 1 | Angle Head Bottom Assembly | --- | 21 | Forward/Reverse Actuator | W5330-K75 |
| 2 | Screw, Hammer Case (4 Required) | --- | 22 | Motor Sleeve | W5330-K40Y |
| 3 | Gasket, Cover | --- | * | Trigger Kit | R3100-93K |
| 4 | Cover | --- | 23 | Trigger | --- |
| 5 | Impact Mechanism Kit | W5330-K724 | 24 | Pin, Trigger | --- |
| * | Socket Retainer Kit | --- | 25 | Switch and contact block asm | W5330-A93 |
| | For W5330 | 2115-K425 | * | Housing Kit | W5330-K40 |
| 6 | Socket Retainer | --- | 26 | Right Housing | --- |
| 7 | O-Ring or Socket Retainer Spring | --- | 27 | Left Housing | --- |
| | For W5330 | 2125QTI-K425 | * | Serial Number Label | --- |
| 6 | Socket Retainer | --- | * | Information Label | --- |
| 7 | O-Ring or Socket Retainer Spring | --- | 28 | Screw, Housing (6 Required) | --- |
| * | Anvil Kit - for W5330 | W5330-K626 | * | Fastener Kit | W5330-K105 |
| 8 | Anvil 3/8" | --- | 2 | Screw, Angle Head (8 Required) | --- |
| * | Socket Retainer Kit (2115-K425) | --- | 28 | Screw, Housing (6 Required) | --- |
| * | Anvil Kit - for W5350 | W5350-K626 | 29 | Screw, Motor (2 Required) | --- |
| * | Anvil 1/2" | --- | * | Label Kit | W5330-K99 |
| * | Socket Retainer Kit (2125QTI-K425) | --- | * | Warning Label | --- |
| * | Planet Gear Kit | W5330-K10 | * | Serial Number Label | --- |
| 9 | Planet Gear (3 Required) | --- | * | Information Label | --- |
| 10 | Carrier - Planet Gear | --- | * | Grease | --- |
| 11 | Ring Gear | --- | * | IR #105 (1 lb can) - for Impact Assembly | 105 1LB |
| * | Drive Gear Kit | W5330-K551 | * | IR #105 (8 lb can) - for Impact Assembly | 105 8LB |
| 12 | Bevel / Pinion Shaft Assembly | --- | * | IR #67 (1 lb can) - for Gearing | 67 1LB |
| 13 | Bevel Gear | --- | * | IR #67 (8 lb can) - for Gearing | 67 8LB |
| 14 | Spur Gear | --- | * | Grease Gun | R000A2-228 |
| 15 | Key - 2x2x25 | --- | * | Carrying Case | W5330-CASE |
| 16 | Spur Shaft | --- | * | Carrying Case Latch | W7000- LATCH |
| 17 | Spur Bearing (2 Required) | --- | * | 20V Li-Ion Battery Pack (1.5 Ah) | BL2005 |
| 18 | Needle Bearing, Bevel Pinion Shaft | --- | * | 20V Li-Ion Battery Pack (3.0 Ah) | BL2010 |
| * | Electric Motor Kit | W5330-K54 | * | Battery Charger | BC1120 |
| 19 | Motor / Pinion Gear Assembly | --- | * | Spline Wrench (for Removal of Ring Gear) | 170-SW |
| 20 | O-Ring (1 Required) | --- | * | Protective Boot | W5330-BOOT |

* Not Illustrated

Parts and Maintenance

When the life of the tool has expired, it is recommended that the tool be disassembled, degreased and parts be separated by material so that they can be recycled.

Tool repair and maintenance should only be carried out by an authorized Service Center.

Refer all communications to the nearest **Ingersoll Rand** Office or Distributor.

Related Documentation

For additional information refer to:

Cordless Impact Wrench Product Safety Information Manual 04581146.

Cordless Impact Wrench (W5300 Series) Product Information Manual 47515495001.

Manuals can be downloaded from ingersollrandproducts.com.



ingersollrandproducts.com
© 2014 Ingersoll Rand

47515464001

Edition 1
January 2014