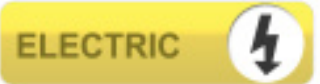


TOOLS FOR THE SPECIALIST AXIAL FANS/ AIR MOVERS “SPITZJET“



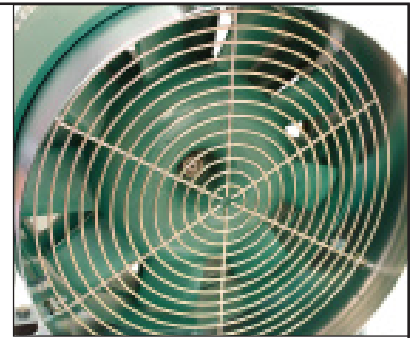
AXIAL FAN FEATURES



Pneumatic or electric type



For suction and blowing



Protective grill



MOBILE TYPE

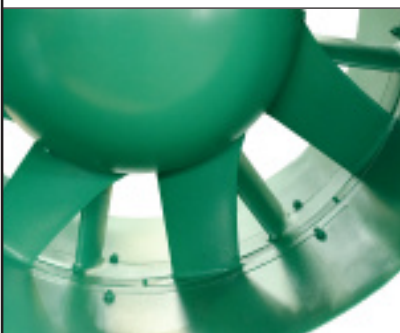
ATEX- Safety Class

STATIONARY TYPE

Fan wheel (grill on request)

Load-bearing eye

Air supply with shutoff device



TECHNICAL SPECIFICATION

Performance data at an operating pressure of 4 (5) bar (cont. flow).

PNEUMATIC - AXIAL FAN nominal diameter 300 mm

Mobile axial fan with 300 mm nominal diameter for various ventilation work.

Earthing cable required.



| | ATEX Guideline 94/9 EC | Nominal diameter | Length | Max. operating pressure | Air consumption | Volume flow (unrestricted) | Noise level | Weight |
|--------------------|------------------------|------------------|--------|-------------------------|---------------------|----------------------------|-------------|--------|
| Order no. | | mm | mm | bar | m ³ /min | m ³ /s | dB(A) | kg |
| 8 1611 0300 | II2GcT6 | 300 | 350 | 5 | 0.45 | 0.57 | 85.7 | 13.0 |

PNEUMATIC - AXIAL FAN nominal diameter 300 mm

Mobile axial fan with 300 mm nominal diameter for various ventilation work.

Earthing cable required.



| | Nominal diameter | Length | Max. operating pressure | Air consumption | Volume flow (unrestricted) | Noise level | Weight |
|--------------------|------------------|--------|-------------------------|---------------------|----------------------------|-------------|--------|
| Order no. | mm | mm | bar | m ³ /min | m ³ /s | dB(A) | kg |
| 8 1601 0300 | 300 | 350 | 5 | 0.58 | 0.78 | 87 | 13.0 |
| 8 1602 0300 | 300 | 350 | 5 | 1.16 | 1.00 | 85 | 13.0 |
| 8 1603 0300 | 300 | 370 | 5 | 0.58 | 0.78 | 85 | 14.0 |

PNEUMATIC - AXIAL FAN nominal diameter 300 mm

Stationary axial fan with 300 mm nominal diameter for various ventilation work.

Earthing cable required.

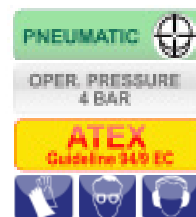


| | Nominal diameter | Length | Max. operating pressure | Air consumption | Volume flow (unrestricted) | Noise level | Weight |
|--------------------|------------------|--------|-------------------------|---------------------|----------------------------|-------------|--------|
| Order no. | mm | mm | bar | m ³ /min | m ³ /s | dB(A) | kg |
| 8 1501 0300 | 300 | 440 | 4 | 1.28 | 1.53 | 101 | 22.0 |

PNEUMATIC - AXIAL FAN nominal diameter 300 mm

Stationary axial fan with 300 mm nominal diameter for various ventilation work. Suitable for e. g. tank aeration, cleaning work and many other applications in explosive areas.

Earthing cable required.



| | ATEX Guideline 94/9 EC | Nominal diameter | Length | Max. operating pressure | Air consumption | Volume flow (unrestricted) | Noise level | Weight |
|--------------------|------------------------|------------------|--------|-------------------------|---------------------|----------------------------|-------------|--------|
| Order no. | | mm | mm | bar | m ³ /min | m ³ /s | dB(A) | kg |
| 8 1531 0300 | II2GcT6 | 300 | 440 | 4 | 2.02 | 1.57 | 99.0 | 21.0 |

TECHNICAL SPECIFICATION

Performance data at nominal voltage.
Performance data at an operating pressure of 4 (5) bar (cont. flow).

ELECTRIC - AXIAL FAN nominal diameter 300 mm

Electric fan, especially for explosive areas with 300 mm nominal diameter and protection class IP55.

Earthing cable required.



| | ATEX Guideline 94/9 EC | Nominal diameter | Nominal speed | Motor output | Nominal voltage | Current consumption at nom. voltage | Alternating current single-phase | Alternating current three-phase | Volume flow (unrestricted) | Noise level | Weight |
|--------------------|------------------------|------------------|---------------|--------------|-----------------|-------------------------------------|----------------------------------|---------------------------------|----------------------------|-------------|--------|
| Order no. | | mm | rpm | kW | V | A | Hz | Hz | m ³ /s | dB(A) | kg |
| 8 1020 0140 | II2GcT3 | 300 | 2,840 | 0.35 | 230/400 | 1.6/0.92 | | | 1.0 | 86.0 | 20.0 |
| 8 1020 0840 | II2GcT3 | 300 | 2,900 | 0.37 | 110 | 5.1 | 50 | 50 | 1.0 | 85.0 | 20.5 |
| 8 1020 0850 | II2GcT3 | 300 | 2,900 | 0.37 | 110 | 5.1 | 50 | | 1.0 | 85.0 | 20.5 |
| 8 1020 0860 | II2GcT3 | 300 | 2,900/3,480 | 0.37 | 110 | 5.1 | 50/60 | | 1.0 | 85.0 | 20.5 |
| 8 1020 0870 | II2GcT3 | 300 | 2,870 | 0.37 | 230 | 2.3 | 50 | | 1.0 | 85.0 | 20.5 |

PNEUMATIC - AXIAL FAN nominal diameter 400 mm

Built-in fan with 400 mm nominal diameter and increased conveying volume.

Earthing cable required.



| | Nominal diameter | Length | Maximum operating pressure | Air consumption | Volume flow (unrestricted) | Noise level | Weight |
|--------------------|------------------|--------|----------------------------|---------------------|----------------------------|-------------|--------|
| Order no. | mm | mm | bar | m ³ /min | m ³ /s | dB(A) | kg |
| 8 1502 0300 | 400 | 440 | 4 | 2.11 | 2.70 | 92 | 32.0 |

PNEUMATIC - AXIAL FAN nominal diameter 500 mm

Built-in fan with increased conveying volume and a volume flow of more than 4 m³/ sec.

Earthing cable required.



| | Nominal diameter | Length | Maximum operating pressure | Air consumption | Volume flow (unrestricted) | Noise level | Weight |
|--------------------|------------------|--------|----------------------------|---------------------|----------------------------|-------------|--------|
| Order no. | mm | mm | bar | m ³ /min | m ³ /s | dB(A) | kg |
| 8 1503 0300 | 500 | 520 | 4 | 2.73 | 4.33 | 90 | 46.0 |

TECHNICAL SPECIFICATION

Performance data at an operating pressure of 4 (5) bar (cont. flow).

PNEUMATIC - AXIAL FAN nominal diameter 500 mm

Built-in fan with increased conveying volume and a volume flow of more than 4 m³/ sec for all explosive areas of equipment group II, category 2G.

Earthing cable required.



| | ATEX Guideline 94/9 EC | Nominal diameter | Length | Maximum operating pressure | Air consumption | Volume flow (unrestricted) | Noise level | Weight |
|--------------------|------------------------|------------------|--------|----------------------------|---------------------|----------------------------|-------------|--------|
| Order no. | | mm | mm | bar | m ³ /min | m ³ /s | dB(A) | kg |
| 8 1533 0300 | II2GcT6 | 500 | 520 | 4 | 2.73 | 4.33 | 105 | 46.0 |

PNEUMATIC - AXIAL FAN nominal diameter 600 mm

Our most powerful fan with a volume flow of more than 5 m³/ sec.

Earthing cable required.



| | Nominal diameter | Length | Maximum operating pressure | Air consumption | Volume flow (unrestricted) | Noise level | Weight |
|--------------------|------------------|--------|----------------------------|---------------------|----------------------------|-------------|--------|
| Order no. | mm | mm | bar | m ³ /min | m ³ /s | dB(A) | kg |
| 8 1504 0300 | 600 | 520 | 4 | 3.84 | 5.83 | 86 | 58.0 |

PNEUMATIC - AXIAL FAN nominal diameter 600 mm

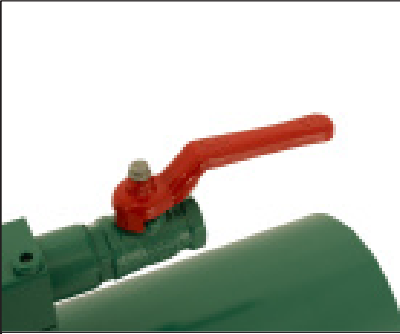
Our most powerful fan with a volume flow of more than 5 m³/ sec for all explosive areas of equipment group II, category 2G.

Earthing cable required.

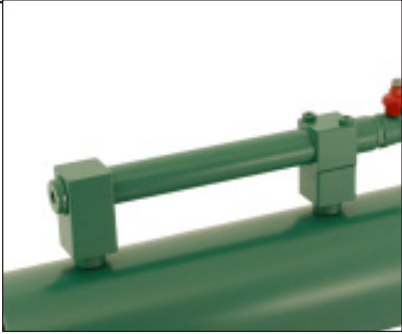


| | ATEX Guideline 94/9 EC | Nominal diameter | Length | Maximum operating pressure | Air consumption | Volume flow (unrestricted) | Noise level | Weight |
|--------------------|------------------------|------------------|--------|----------------------------|---------------------|----------------------------|-------------|--------|
| Order no. | | mm | mm | bar | m ³ /min | m ³ /s | dB(A) | kg |
| 8 1534 0300 | II2GcT6 | 600 | 520 | 4 | 3.84 | 5.83 | 99 | 58.0 |

AIR MOVER FEATURES „SPITZJET“



Handle with on/off valve

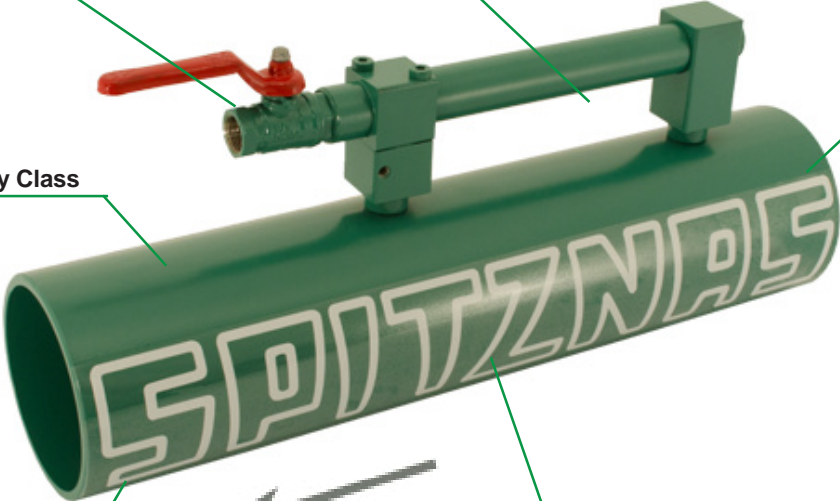


Handle for mobile use

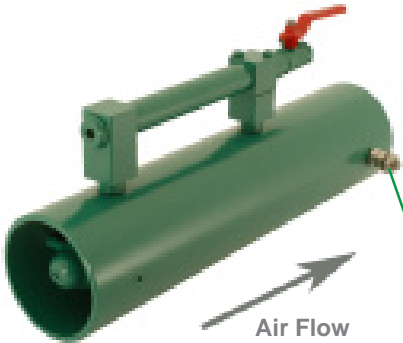


Suction side with injector nozzle

ATEX-Safety Class



Air Flow

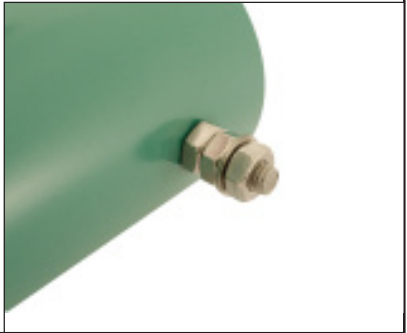


Air Flow

Exhaust side

For ventilation and exhaust

Earthing cable connection



TECHNICAL SPECIFICATION

Additional accessories on request.
Performance data at an operating pressure of 4-6 bar (cont. flow).

PNEUMATIC - AIR MOVER „SPITZJET“

Due to the injector principle, these robust fans are maintenance-free and free of wear and tear. The practical handle ensures mobile work at universal applications.

Earthing cable required.



| Order no. | ATEX Guideline 94/9 EC | Nominal diameter mm | Length mm | Volume flow (unrestricted) | | | Noise level (unrestricted) dB(A) | Air consumption m³/min | Connection | Weight kg |
|---------------------------------|------------------------|---------------------|-----------|----------------------------|--------------|--------------|----------------------------------|------------------------|--------------|-----------|
| | | | | 6 bar m³/min | 5 bar m³/min | 4 bar m³/min | | | | |
| 8 1614 0010 | II2GcT6 | 100 | 410 | 20.5 | 17.7 | 14.9 | 100.8 | 1.6-2.3 | G 3/8"female | 3.3 |
| 8 1616 0010 | II2GcT6 | 125 | 425 | 26.2 | 23.3 | 19.6 | 101.1 | 1.7-2.4 | G 3/8"female | 3.9 |
| 8 1618 0010 | II2GcT6 | 150 | 435 | 49.8 | 42.7 | 36.3 | 103.8 | 2.8-4.4 | G 1/2"female | 5.2 |
| 8 1620 0010 | II2GcT6 | 180 | 450 | 67.5 | 62.0 | 53.6 | 104.4 | 2.9-4.5 | G 1/2"female | 5.3 |
| 8 1622 0010 | II2GcT6 | 200 | 450 | 78.3 | 65.3 | 54.3 | 115.8 | 6.3-9.7 | G 3/4"female | 6.8 |
| 8 1624 0010 | II2GcT6 | 250 | 450 | 88.7 | 78.9 | 67.2 | 116.3 | 6.4-9.5 | G 3/4"female | 8.0 |
| 8 1634 0010¹⁾ | IM2cT6 | 100 | 410 | 20.5 | 17.7 | 14.9 | 100.8 | 1.6-2.3 | G 1/2"female | 4.8 |
| 8 1636 0010¹⁾ | IM2cT6 | 125 | 425 | 25.8 | 20.4 | 17.4 | 101.1 | 1.7-2.4 | G 1/2"female | 5.6 |
| 8 1638 0010¹⁾ | IM2cT6 | 150 | 435 | 49.8 | 42.7 | 36.3 | 103.8 | 2.8-4.4 | G 1/2"female | 7.5 |
| 8 1640 0010¹⁾ | IM2cT6 | 180 | 450 | 67.5 | 62.0 | 53.6 | 104.4 | 2.9-4.5 | G 1/2"female | 7.7 |
| 8 1642 0010¹⁾ | IM2cT6 | 200 | 450 | 78.3 | 65.3 | 54.3 | 115.8 | 6.3-9.7 | G 3/4"female | 9.9 |
| 8 1644 0010¹⁾ | IM2cT6 | 250 | 450 | 88.7 | 78.9 | 67.2 | 116.3 | 6.4-9.5 | G 3/4"female | 11.5 |

¹⁾ Stainless steel type

ACCESSORIES

EARTHING CABLE

Imperatively required for all axial fans and air movers.
Can be used for all fans and SPITZJETS.
The total length with clamp is 1.5 m.



| Order no. | Description |
|--------------------|-------------------------|
| 9 3707 0020 | Earthing cable complete |

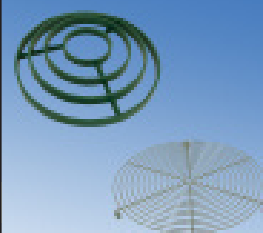
ACCESSORIES FOR AXIAL FANS

Additional accessories on request.

PROTECTIVE GRILL

For safety reasons an additional grill should be fitted when used without ducting.
Select according to nominal diameter of fan.

| Used for | for fans with nominal diameter | | | |
|--------------------------------|--------------------------------|-------------|-------------|-------------|
| | 300 mm | 400 mm | 500 mm | 600 mm |
| all fans with nominal diameter | 8 1501 7010 | 8 1502 7010 | 8 1503 7010 | 8 1504 7010 |
| fans 8 1020, 8 1601...8 1611 | 8 1601 2070 | | | |



FLANGE ACCORDING TO DIN 21603

Required if flanged pipes are to be fitted on suction and/or discharge side.
Select according to nominal diameter of fan.

| Description | for fans with nominal diameter | | | |
|------------------------|--------------------------------|-------------|-------------|-------------|
| | 300 mm | 400 mm | 500 mm | 600 mm |
| According to DIN 21603 | 9 3001 0010 | 9 3001 0020 | 9 3001 0030 | 9 3001 0040 |



CONNECTING PIECE, ANTISTATC

The connecting piece is an intersection from hose to fan.
It can be installed at the suction side and at the discharge side.

| Description | for fans with nominal diameter | | | |
|------------------|--------------------------------|-------------|-------------|-------------|
| | 300 mm | 400 mm | 500 mm | 600 mm |
| Connecting piece | 9 3709 0260 | 9 3709 0270 | 9 3709 0280 | 9 3709 0290 |



QUICK-SEAL COUPLING, ANTISTATIC

The quick-seal coupling joins the connection and the hose.

| Description | for fans with nominal diameter | | | |
|---------------------|--------------------------------|-------------|-------------|-------------|
| | 300 mm | 400 mm | 500 mm | 600 mm |
| Quick-seal coupling | 9 3709 0300 | 9 3709 0310 | 9 3709 0320 | 9 3709 0330 |



AIR DUCT, ANTISTATIC, 5 m

The air duct is flexible and adapts itself perfectly to any shape.
It can be extended variably by using the quick-seal coupling.

| Description | for fans with nominal diameter | | | |
|-------------|--------------------------------|-------------|-------------|-------------|
| | 300 mm | 400 mm | 500 mm | 600 mm |
| Air duct | 9 3709 0220 | 9 3709 0230 | 9 3709 0240 | 9 3709 0250 |



ADAPTER

The reducing piece adapts the hose diameter to various location situations.

| Order no. | Description |
|-------------|-------------------------------------------------|
| 9 3703 0050 | Adapter from diameter 300 mm to diameter 200 mm |
| 9 3703 0280 | Adapter from diameter 300 mm to diameter 80 mm |
| 9 3703 0290 | Adapter from diameter 300 mm to diameter 100 mm |
| 9 3703 0300 | Adapter from diameter 300 mm to diameter 150 mm |



SPITZNAS

Maschinenfabrik GmbH, Fellerstraße 4, D-42555 Velbert, Germany
Tel: +49-(0)2052-605-0 Fax: +49-(0)2052-605-29
E-Mail: sales@spitznas.com Internet: http://www.spitznas.com