

Snap-on Industrial

DELIVERING EXCELLENCE

Tools @ Height

PRODUCT AND USER GUIDE

**STOPS
DROPPED
TOOLS**



Snap-on

Snap-on Industrial

DELIVERING EXCELLENCE

Tools @ Height



PROTECTING PEOPLE



PREVENTING DAMAGE



**PROVIDING HIGH QUALITY
TOOL SOLUTIONS**

Snap-on Industrial understands that working at height is one of the most dangerous activities that can be undertaken during construction, installation, maintenance and repair operations so we have developed our **Tools@Height** safety system over the past decade to meet the ever growing demands for safe, high performance tools.

Comprising over 1,000 tools, the highly successful system is used by a vast array of trades involved in Aviation, Communication, Oil, Gas, Nuclear, Wind, Utilities and many other industrial sectors. In addition, our leading range of safety lanyards and tool pouches are designed to complement our expanding portfolio of tools and deliver the very best in safety, reliability and ergonomics.

The Work at Height Regulations 2005 specify the minimum requirements that should be in place to promote safety and health as primary considerations when planning and undertaking work at height for the benefit of employees, employers, contractors and the general public.

Designed to reduce injuries, fatalities and near misses by putting fall and drop prevention at the forefront of working at height operations, the Regulations specify that approved safety equipment and systems must be used to stop personnel falling or being struck by a dropped object.

Building on these regulations, we operate an extensive research, development and quality management programme which has resulted in advanced design, manufacturing, testing and operation procedures covering all elements of the **Tools@Height** system.

All tools, accessories and lanyards are thoroughly tested against demanding criteria and certified by SATRA, a world leading testing authority. This demonstrates our total commitment to achieving the highest safety and quality standards.

Choose **Snap-on Industrial** and let our professional guidance and tool safety expertise help you in selecting the right products to meet your needs.



Tools @ Height

Inspection - Operation - Storage

Introduction

There is a significant risk of dropped objects when using tools and portable equipment at height so all tools and equipment must be properly secured to prevent them dropping.

Designed and developed by Snap-on Industrial, Tools@Height is a proven tool retention system used in the oil & gas, energy, utilities, construction, aerospace, and other sectors worldwide.

Tools@Height delivers total tool control and security, from storage in the workshop, to transportation to the work site, to reliable retention of tools when working at height.



History

Tools@Height was launched into the UK market in 2000 when we were asked to provide tool retention systems to enhance maintenance safety at nuclear power stations.



In 2003, we worked with leading drilling companies to develop tools and special kits for safe working at height on oil & gas drill rigs and production facilities, offshore and onshore.

Tools@Height is continually evolving and expanding to meet the demands of customers in many sectors worldwide.

Extensive Range

There are over 1,000 tools and accessories in the system. Each tool is fitted with a strong and reliable lanyard attachment point which is designed not to compromise the tool's effectiveness. Various types of Snap-on tool lanyards are available which can, depending on tool weight, be attached to the operator or to a suitable fixed point in the work area adjacent to the operator. Tools@Height products are tested and certified in accordance with the Snap-on ISO 9001 Quality Management System.

Tools @ Height



High level uses

Drilling derricks, wind turbines, aviation, buildings, telecommunication masts, power line pylons, bridges, cranes, hangars, gantries

Low level uses

Prevents tools from falling into machinery, food production lines, water filter beds, mine shafts, fuel rod cooling ponds, crushers, restricted access areas

Site Safety

1. Tools@Height should be used for tasks undertaken at 2 metres or above, or where a tool can drop more than 2 metres, for example, when working at or near a handrail.
2. All personnel must be properly trained, possess appropriate safety certificates and be competent to use Tools@Height.
3. The site safety officer should do a risk assessment of the proposed task and prepare a method statement defining tool types, equipment, check lists and permit to work procedures.
4. Check the work area is clear of loose objects and debris.
5. Check equipment and structures within the work area to ensure all fittings, bolting, covers etc. are properly secured.
6. Check floor grating in work area is safe. If necessary, use tie-down covers to stop small items falling through gaps.
7. Place barriers around the “drop zone” below the work area.
8. Check toe-boards are fitted to any scaffolding platforms used.
9. Equipment/materials to be anchored to stop them dropping.
10. When work is in progress, keep area tidy to reduce incidents.
11. Be aware of other activities around and under the work area.
12. When work is complete, check that no tools, equipment or materials have been left at height.
13. Ensure the work area is left tidy and all tools, equipment and materials are returned to their proper storage place.

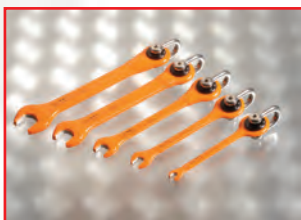
Secondary Retention

As previously mentioned, a pre-work site survey should include checking that all permanent equipment is properly secured. There are regular occurrences of various types of equipment detaching from their fixings and becoming potentially lethal missiles.

Floodlights, navigation lights, CCTV cameras, loudspeakers, warning beacons and other items can come loose due to wind, wave, collision, corrosion and poor maintenance.

Snap-on can provide effective Secondary Retention tethers and fittings to mitigate against these potential safety violations.

We can supply certified standard tethers for loads ranging from 5kg to 250kg. We can also provide custom tethers for higher loads and special applications.



Tool Retention



1. Snap-on tools and lanyards are tested and certified. They must not be modified or mixed with products from other sources.
2. Tools to be secured during transit and in the work area.
3. Tools must be securely stored in bags or pouches which have internal lockable hooks to which tools should be attached.
4. Kit bag should be used to hoist tools to the work location.
5. Tool bag/pouch must be securely attached to the operator using the chest strap or belt loops and leave both hands free.
6. Tool bag/pouch must not impede the functioning of operator's safety harness or equipment.

7. Radios, gas detectors and other equipment are often dropped so all handheld devices should be secured against falling.
8. Carry pouches must always be used for radios and other portable equipment which do not have attachment points.
9. Small components should be stored in the internal pocket of a tool bag/pouch or in separate tethered storage bags.
10. Belt clips that allow a radio to become detached when turned 180 degrees should never be used.
11. Snap-on can provide tethered pouches and bags for all types and sizes of portable equipment.

Checking Equipment

1. Before use, check equipment to ensure it is suitable for the intended use, it operates correctly and is in good condition.
2. Inspection requirements for tools, lanyards and bags can be found in the relevant sections in this document.
3. Equipment must also undergo regular inspection by a competent person in accordance with an approved schedule.
4. Additional inspections should be made where a hazard is present that could cause deterioration of the equipment, for example, acidic, alkaline or grit blasting environments.



5. After a dropped tool incident, the tool and lanyard must be inspected for damage and checked for correct functioning. Inform the site safety officer of the incident who may require the equipment withdrawn from service.
6. Damaged, worn or defective equipment is to be withdrawn from service immediately and the site safety officer informed.



Tool and Lanyard Selection

- 1.** Tool and lanyard selection needs to be carefully considered to ensure operator safety and comfort.
- 2.** In addition to our wide range of standard lanyards, we will manufacture special lanyards for specific applications.
- 3.** Tools@Height lanyards are fitted with lockable screwgate hooks at each end. Hooks are permanently attached to the lanyard material so they cannot be accidentally detached.

4. Tools up to 5lbs (2.3kg) may be attached by lanyard to the operator but a lower limit may be preferable for operator comfort, safety and ease of operation.

5. Most individual tools can be attached to the operator by a lanyard. For example, 95% of the tools in the Tools@Height system weigh less than 2lbs (0.91kg) each so can be attached to the operator, if required.

6. Most tool combinations can also be attached to the operator. For example, assembling a 32mm socket and 11" extension to a 1/2" drive ratchet gives a total weight of 3.24lbs (1.47kg).



7. Attaching tools to the wrist requires special care to avoid injury to this vulnerable area. Our wrist straps and wrist lanyards are rated for tools up to 5lbs (2.3kg) but a lower limit is recommended. The operator should decide if a tool under 5lbs (2.3kg) is suitable for attachment to the wrist. Tools over this weight must not be attached to the wrist.



8. Tools over 5lbs (2.3kg), and all weights of flogging wrench, should not be attached to the operator. These should be attached, by lanyard, to a suitable fixed point in the work area adjacent to the operator.

Tools @ Height

9. Select a lanyard to suit the weight of tool you intend to use. The weight of each tool can be found on the kit data sheet while each lanyard is fitted with a safety label stating the maximum tool weight it is rated for.
10. One lanyard hook should be locked to a suitable attachment point on the operator's safety harness, belt or wrist strap.
11. The other lanyard hook should be locked to the tool.
12. Dropped tools or equipment must be reported immediately.
13. After use, or before moving location, lock the tool to a screwgate hook fitted within the bag/pouch.
14. When not in use, both lanyard hooks can be clipped to the bag/pouch external "D" ring and the lanyard stowed inside.

Snap-Coil Tool Anchor

1. Tools@Height wrenches and several other tools are fitted with the Snap-Coil Tool Anchor which was invented by Snap-on to avoid the use of welded fittings. The Snap-Coil has no weld to break or inspect and has superior flexibility and shock-absorbing properties over fabricated fittings.
2. Snap-Coils are made from 316 stainless steel and chrome plated. They are available in several sizes to suit different tools. Samples of each size are drop tested and certified.
3. Before use, check the Snap-Coil is correctly fitted to the tool and shows no damage or distortion.



4. A Snap-Coil is not designed to "breakaway" from the operator if a tool is snatched into moving machinery. No "breakaway" device can be guaranteed 100% effective so best practice is for machinery to be shut down, isolated and a safe working area designated before any work is undertaken nearby.
5. A Snap-Coil is not designed to "breakaway" from the operator if a tool is trapped when climbing or moving location. Before climbing or moving location the operator must stow tools in a Tools@Height bag or pouch and lock tools to the internal hooks.

Tool Storage

1. Tools@Height tools and lanyards must be securely stored when not in use, be fully controlled at all times during transit and when in the work area.
2. Tools and lanyards are supplied in distinctive bags or roll-cab storage cabinets which are identified with the Tools@Height logo and fitted with a data label showing the kit serial number and date of manufacture.
3. Drawers are fitted with high density, two colour, foam pads which have recesses for each tool. Each recess has a bright colour allowing a missing tool to be easily identified.
4. Standard drawer foam colour is black with a yellow recess. Other colour options are available.
5. A missing tool must be immediately recovered. It may have been left at the work site where it could fall and harm personnel, damage equipment or disrupt production.
6. Tools@Height kits contain a Data Book which identifies each tool using part numbers, drawer images and layout drawings.
7. One person per shift should be designated as responsible for tool storage, serve as key holder and be the custodian of the Tools Register. The person responsible will log all tools in and out on the Tools Register.
8. Kits can be optionally supplied with the Snap-on Level 5 Asset Management System which provides electronic security access and complete tool control and accountability.
9. Level 5 kits can be networked and monitored remotely by operations, maintenance and safety specialists who can download reports on tool and consumable usage and rapidly audit multiple Tools@Height kits.

Snap-on Industrial UK
ISO9001 Quality Assured Supplier of Choice
Unique Kit Identification Number
2001011566
Please quote this number in any correspondence
Customer Services Tel: +44(0)1336 413 904
www.snap-on.com/industrialuk
E-mail: ukinfo@snap-on.com/project@snap-on.com
Supplied: November 2011



Hammers

Handles are fitted with a lanyard attachment shackle in the end of the handle. Shackles are stainless steel and have a riveted pin.

Check the shackle and shaft for damage or wear. Do not use if the head is chipped, cracked or mushroomed.



Adjustable Wrenches

A stainless steel Quick-Link is fitted in a hole drilled in the threaded tang. This acts as a lanyard attachment point and a stop to prevent the tang being un-threaded and becoming a dropped object.

Check the tool for damage or wear. Ensure the locking nut is not loose and tighten if necessary.



Pliers, Chisels, Hacksaws and Knives

Handles are fitted with a stainless steel lug or 25mm split ring as a lanyard attachment point.

Check the lug or split ring is secure and has no major distortion or damage.



Punches, Screwdrivers and Hex Keys

These are fitted with a rotating stainless steel lug which is retained by a stainless steel collar pinned to the shaft.

Check the lug to ensure it rotates freely and the collar is not loose.



Torque Wrenches

A stainless steel D-shackle lanyard attachment point is fitted at the end of the handle.

Check the screws on D-shackle are not loose and tighten if necessary.



Files

Handles are fitted with a stainless steel D-shackle. Check the shackle pin is not loose and tighten if necessary.

Check the file blade is fully and firmly fitted into the handle. Check locking pin is in place.



Lock-on Sockets and Extensions

Lock-on sockets and extension shafts were invented by Snap-on to prevent accidental release from the ratchet driver. Instead, a positive action is needed in order to detach a socket or shaft.

The operator must insert the probe from a KSPINTOOL pin release tool in the side hole of the socket or extension shaft and depress the spring-loaded retaining pin. This must be done in a safe area in case a component is dropped.



- Check the driver pin is not stuck and operates correctly.
- Check socket side holes are clear and do not obstruct the driver pin.

Power-Safe HV Insulated Tools

Power Safe tools comply with EN60900 and are marked with the 1000V symbol. A sample of each tool from every production run is dropped tested, stripped-down, inspected and certified.



Insulated pliers, cutters and wrenches have a lanyard attachment point built into one handle.

- Check insulation for nicks, cuts and worn areas.
- Check black bush is fitted correctly and undamaged.
- Check shackle pin is not loose and tighten if necessary.

Insulated screwdrivers feature a rotating collar with eyelet to which a lanyard can be attached.

- Check the collar and tool insulation are not damaged
- Check the tool is functioning correctly.



Power Tools@Height

Snap-on Power Tools@Height (PTAH) are fitted with a steel lug to which a lanyard can be attached. They are also fitted with Snap-on Lock-on drives to which Lock-on sockets and extension shafts can be fitted.

Our Lock-on system ensures sockets and shafts are not accidentally released from the drive. Instead, a deliberate action is required to detach them.

PTAH units feature a dual, slide-on rail for battery power- packs. Power packs have double-button locks for positive retention.

- Do not use any power tools unless you are trained and authorized to do so.
- Do not wear rings, jewellery, or loose clothing when operating power tools.
- Wear appropriate Personal Protective Equipment (PPE), such as safety goggles, etc.
- Read the PTAH instruction manual before use
- Inspect the tool for wear or damage and ensure moving parts operate correctly.
- Plan work in advance and configure the tool with the required sockets/extensions.
- PTAH units should only be used with THCARA15 and THCARA25 lanyards.
- Ensure the power pack is fully engaged on the slide-on rail and locked in position.
- Replace sockets and extensions in a safe area where they cannot fall.
- Replace power pack in a safe area where it cannot fall.
- Position charger in a safe location where it cannot fall.



Lanyards

Lanyards are manufactured from high quality materials, batch tested and certified.

Lockable snap-hooks are fitted to lanyards to ensure positive tool retention.

Each lanyard is fitted with a safety label stating the maximum tool weight to be used.

Safety Label - Side 1



- Maximum tool weight
- Warning
- Wear Safety Goggles
- Do not use near rotating or moving machinery
- Inspect before use
- Do not use if worn or damaged

Safety Label - Side 2



- Part number
- Tools Lanyard
- Serial number
- Snap-on Industrial
- tah@snapon.com
- www.snapon.com/industrialuk

Lanyard Hooks

Stainless steel, screwgate, locking hooks (40mm, 60mm and 80mm) are fitted to lanyards.

Check as follows before use:-

- Inspect hook for distortions, cracks, corrosion, or pitted surfaces.
- Keeper (latch arm) must seat into the nose without binding.
- Keeper must not be distorted or obstructed.
- Keeper spring must exert sufficient force to firmly close the keeper.
- Knurled locking ring must easily engage with, and rotate on, the threaded portion.
- Knurled locking ring must secure the keeper in the closed position and prevent it opening.



Webbing Lanyards

LANWRIST1 - for tools up to 5lbs (2.3kg)
300mm x 10mm wrist lanyard with stainless steel screwgate locking hooks.



LANWEB - for tools up to 10lbs (4.5kg)
1.0m x 25mm web lanyard with stainless steel screwgate locking hooks.



TCWS1 - for tools up to 5lbs (2.3kg)
Wrist band with velcro fastener and stainless steel 'D' ring for lanyard.



Check as follows before use:-

- Bend webbing over a pipe and look for cuts, breaks or defective stitching.
- Check for discoloration, cracks or charring which may be chemical/heat damage.
- Check snap-hooks as described above.

Wire Lanyards

LANWIRE for tools up to 15lbs (6.8kg)
Heavy tools must be attached to a local hard point using stainless steel wire lanyards fitted with locking hooks.

LANWIRE-S - 1.5m long

LANWIRE-1S - 1.0m long

LANWIRE-0.5S - 0.5m long



Check as follows before use:-

- Rotate lanyard and look for broken strands or excessive wire wear.
- Check the thimble is firmly seated in the eye of the splice.
- Thimble edges must be free of sharp edges, distortion, or cracks.
- Splice loop must be securely crimped with a stainless steel ferrule with at least 1mm of wire protruding from the ferrule.
- Splice must not have loose or have cut strands.
- Check snap-hooks as described above.

Coiled Lanyards

LANCOIL1-S for tools up to 5lbs (2.3kg)
Stretches to 1.0m

LANCOIL2-S for tools up to 10lbs (4.5kg)
Stretches to 2.0m

Hi-Vis 6mm urethane coiled lanyards with manganese bronze swivels and stainless steel, screwgate locking hooks.

LANCOIL1-S with **TCWS-1** Wrist Band

LANCOIL2-S attached to pouch D-ring

Check as follows before use:-

- Bend and stretch lanyards and look for cuts, breaks or wear.
- Check snap-hooks as described above.



Retracting Lanyards

THCARA15 for tools to 15 lbs (6.8 kg)

High strength 3/4" nylon webbing with self retracting inner coil and two stainless steel screwgate locking snap-hooks.
Extends to 3' 6" (1.07m) approx.

THCARA25 for tools to 25 lb (11.3 kg)

High strength 1" nylon webbing with self retracting inner coil and two stainless steel locking snap-hooks. Extends to 10' (3.0m) and has overload warning flag.



THCARA25 should be attached to an anchor point in the work area. It should not be attached to an individual.

Check as follows before use:-

- Bend and stretch lanyards and look for cuts, breaks or defective stitching.
- Look for an activated drop indicator or other signs of deployment. If warning signs are found, remove the lanyard from service.
- Check snap-hooks as described above.

Tool Bags and Pouches

Snap-on bags and pouches provide secure tool transportation, are easy to use and comfortable to wear.



- Tools must be securely stored in Snap-on bags or pouches which have internal lockable hooks to which tools can be attached.
- Kit bag should be used to hoist tools to the work location.
- Tool bags and pouches must be securely attached to the operator using the chest strap or belt loops and leave both hands free.
- Bags and pouches must not impede the operator's safety harness or equipment.
- Metal fittings to be checked for cracks, corrosion, pitted surfaces and correct functioning.
- Material to be checked for splits, abrasion and worn stitching.
- Bend belts/straps over a pipe and check for cuts, breaks or worn stitching.

Cleaning

The proper storage and care of safety equipment will help it to perform correctly and prolong its working life.

Wipe down tools and stow them in their correct locations in the tool cabinet drawers.

Clean bags, pouches and lanyards of dirt, corrosives, or contaminants and store in a clean and dry environment, free from fumes or corrosive elements.

Nylon and Polyester

- Wipe off surface dirt with a sponge dampened in plain water.
- Dip sponge in mild solution of water, soap or detergent, work into a thick lather and clean article.
- Wipe with clean cloth and hang to dry away from heat, steam, or sunlight.

Testing and Certification

Tools@Height tools and lanyards are tested and certified in accordance with our ISO 9001 Quality Management System. The following pages are extracts from reports of testing undertaken by SATRA, a world leading product research and testing organisation.



Technical Report

INTRODUCTION

A sample described as Pliers reference "KS0201" was received by SATRA on 17 September 2015, for drop testing. The test was dropped from a height of 4.1m via a 1m barrel with then assessed for damage. Testing was carried out on 17 September 2015.



Figure 1 - Pliers reference "KS0201"

TEST RESULTS

TEST PROTOCOL	RESULT / COMMENTS
Test is classified, via a 1m barrel, compressed from 4mm diameter galvanneal steel pipe (1" x 1/2") configuration with double & cable grip construction, no right end damage point.	Sample reference "KS0201"
Test is classified, via a 4m height from point at which the test is assessed and released. This was to represent and the assessment point recorded for damage following each drop.	No visual evidence of damage to test specimen following drop test.

*****END OF REPORT*****

Report by: Dan Harrison
Signed: Dan Harrison
SATRA Trade
SATRA (01753) 121145
17 September 2015
Page 2 of 2

KS0201 Pliers



Technical Report

INTRODUCTION

A sample described as 10" Pipe Wrench reference "KS0323" was received by SATRA on 17 August 2015, for drop testing. The test was dropped from a height of 4.1m via a 1m barrel with then assessed for damage. Testing was carried out on 17 September 2015.



Figure 1 - 10" Pipe Wrench reference "KS0323"

TEST RESULTS

TEST PROTOCOL	RESULT / COMMENTS
Test is classified, via a 1m barrel, compressed from 4mm diameter galvanneal steel pipe (1" x 1/2") configuration with double & cable grip construction, no right end damage point.	Sample reference "KS0323"
Test is classified, via a 4m height from point at which the test is assessed and released. This assessment point is then assessed for damage following the drop.	No visual evidence of damage to test specimen following drop test.

*****END OF REPORT*****

Report by: Dan Harrison
Signed: Dan Harrison
SATRA Trade
SATRA (01753) 121145
17 September 2015
Page 2 of 2

KS0323 10" Pipe Wrench



Technical Report

INTRODUCTION

A sample described as FLUKE METRAX reference "KS0244" was received by SATRA on 17 August 2015, for drop testing. The test was dropped from a height of 4.1m via a 1m barrel with then assessed for damage. Testing was carried out on 17 September 2015.



Figure 1 - FLUKE METRAX reference "KS02441"

TEST RESULTS

TEST PROTOCOL	RESULT / COMMENTS
Test is classified, via a 1m barrel, compressed from 4mm diameter galvanneal steel pipe (1" x 1/2") configuration with double & cable grip construction, no right end damage point.	Sample reference "KS0244"
Test is classified, via a 4m height from point at which the test is assessed and released. This assessment point is then assessed for damage following the drop.	No visual evidence of damage to test specimen following drop test.

*****END OF REPORT*****

Report by: Dan Harrison
Signed: Dan Harrison
SATRA Trade
SATRA (01753) 121145
17 September 2015
Page 2 of 2

KS02441 Fluke Meter



Technical Report

INTRODUCTION

A sample described as 1/2" IMP impact wrench reference "KS03000" was received by SATRA on 17 September 2015, for drop testing. The test was dropped from a height of 4.1m via a 1m barrel with then assessed for damage. Testing was carried out on 17 September 2015.



Figure 1 - 1/2" IMP impact wrench reference "KS03000"

TEST RESULTS

TEST PROTOCOL	RESULT / COMMENTS
Test is classified, via a 1m barrel, compressed from 4mm diameter galvanneal steel pipe (1" x 1/2") configuration with double & cable grip construction, no right end damage point.	Sample reference "KS0300"
Test is classified, via a 4m height from point at which the test is assessed and released. This assessment point is then assessed for damage following the drop.	No visual evidence of damage to test specimen following drop test.

*****END OF REPORT*****

Report by: Dan Harrison
Signed: Dan Harrison
SATRA Trade
SATRA (01753) 121145
17 September 2015
Page 2 of 2

KS03000 1/2" Impact Wrench

CONTENTS

PAGE

COMPLETE TOOL KITS	18
LANYARDS AND ACCESSORIES	20
POWER TOOLS	21
AIR POWER TOOLS	21
CONSTRUCTION TOOLS	22
SCAFFOLD TOOLS	22
SCREWDRIVERS	22
HAMMERS	23
SLEDGE HAMMERS	25
PUNCHES/CHISELS	27
PRY-BARS	27
PLIERS/CUTTERS	28
SELF RESCUE CUTTERS	29
RATCHETS AND DRIVERS	30
HEX DRIVERS	31
TORX DRIVERS	32
TORQUE WRENCHES	33
TORQUE MULTIPLIERS	33
SQUARE DRIVE ADAPTORS	34
UNIVERSAL JOINTS	34
EXTENSIONS	34
EXTENSIONS - Impact Use	35
SOCKETS - Hand Use	35
SOCKETS - Impact Use	41
FEMALE HEX SOCKET DRIVERS	44
RATCHETING WRENCHES	45
STRIKING WRENCHES	45
WRENCHES	47
ADJUSTABLE WRENCHES	52
CHAIN TONGS	53
CUTTING AND ABRASIVE TOOLS	53
LUBRICATION	55
DIAGNOSTIC TOOLS	55
INSPECTION TOOLS	55
POWER-SAFE 1000V Insulated Tools	57
CUSTOMER SUPPORT	60

COMPLETE TOOL KITS

1000 Series Extra Large Tools@Height Kits

THKIT-GP1000

General Purpose Maintenance Kit



500 Series Large Tools@Height Kits

THKIT-GP500

General Purpose Maintenance Kit

THKIT-EL500

Electrician's Kit, 1000V insulated, 4 drawer
add-on top box for THKIT-GP500



300 Series Medium Size Tools@Height Kits

THKIT-GP300I

General Purpose Maintenance Kit Inch Sizes

THKIT-GP300M

General Purpose Maintenance Kit Metric Sizes



100 Series Portable Tools@Height Kits

THKIT-GP100

Well Service Kit, polycarbonate case

THKIT-EL100

Electricians Kit, 1000V insulated, polycarbonate case



All kits are supplied in extremely robust storage units.

Tools and accessories are pre-loaded into high density 2 colour foam.

In addition to supplying standard kits, we design and build special kits to meet customer requirements.

For further information or to obtain a quotation please email your enquiry to tah@snapon.com

Product Code Wt Kg Product Description

LANYARDS AND ACCESSORIES

TAHBELT	0.25	Belt With Lanyard Attachment Point
TOOLKPR1	0.10	Tool Keeper Belt Attachment inc 2 Stainless Steel Screwgate Hooks
TAHTOOLBAG	0.80	Combined Waist/Shoulder Bag With Integral Stainless Steel Screwgate Hooks
TAHTOOLPOUCH	0.80	Combined Waist/Shoulder Open Pouch Style Bag With Integral Stainless Steel Screwgate Hooks
TAHROBAG8	WOA	8 Litre Round Rope Access Bag
TAHROBAG11	WOA	11 Litre Round Rope Access Bag
LANCOIL1-S	0.10	1m Coiled Urethane Lanyard c/w 60mm Stainless Steel Screwgate Hooks
LANCOIL2-S	0.10	2m Coiled Urethane Lanyard c/w 60mm Stainless Steel Screwgate Hooks



LANWEB-S	0.05	1metre Web Lanyard c/w 60mm Stainless Steel Screwgate Hooks
LANWIRE.5-S	0.05	0.5metre Wire Lanyard c/w 60mm Stainless Steel Screwgate Hooks
LANWIRE1-S	0.05	1metre Wire Lanyard c/w 60mm Stainless Steel Screwgate Hooks
LANWIRE-S	0.10	1.5metre Wire Lanyard c/w 60mm Stainless Steel Screwgate Hooks
LAN-EX13	WOA	Extreme-Duty Wire Lanyard 1.5m Max Tool Weight 13Kg, c/w Screw-Pin D-Shackles
LAN-EX18	WOA	Extreme-Duty Wire Lanyard 1.5m Max Tool Weight 18Kg, c/w Screw-Pin D-Shackles
LAN-EX30	WOA	Extreme-Duty Wire Lanyard 1.5m Max Tool Weight 30Kg, c/w Screw-Pin D-Shackles
THCARA15	WOA	3/4" Super Coil Anchor Duty Tether 15lb, 42" Extension c/w Drop Indicator
THCARA25	0.05	1" Super Coil Anchor Duty Tether 25lb, 10ft Extension c/w Drop Indicator
LANWRIST1	0.01	Short Wrist Lanyard With Locking Hooks

Product Code Wt Kg Product Description

LANYARDS AND ACCESSORIES (con't)

LANVELSTRAP ₁	0.01	Velcro Wrist Strap With D-Ring (for use with LANWRIST ₁ or other lanyards)
THWSRET ₁	0.18	Retractable Wrist Tether 16oz
THUNIRET _{16OZ}	0.12	Retractable Tool tether 16oz
THUNIRET _{32OZ}	0.17	Retractable Tool tether 32oz

POWER TOOLS @ HEIGHT

POWER TOOLS

Cordless

KS03000	7.30	18V Cordless Impact Wrench 1/2"dr
KS03001	5.44	14.4V Cordless Impact Wrench 3/8"dr
KS03004	0.80	7.2V Cordless Impact Wrench 3/8"dr
KS03002	6.80	18V Cordless Drill
KS03003	6.40	14.4V Cordless Drill



AIR POWER TOOLS

KS03100	WOA	Impact Wrench, Air, Heavy Duty, Magnesium Housing, Standard Anvil, 1/2" drive
---------	-----	--



KS03101	WOA	Impact Wrench, Air, Heavy Duty, 3/4" Drive (150-700 ft. lb.)
---------	-----	--



KS03102	WOA	Impact Wrench, Air, Heavy Duty, 1" Drive
---------	-----	---



Product Code Wt Kg Product Description

CONSTRUCTION TOOLS

KS02411	WOA	Bricklayers Hammer
KS02416	WOA	6" Pointing Trowel
KS02431	WOA	Stabila Level 1 Metre
KS02435	WOA	4" Bolster Chisel
KS02436	WOA	11" Brick Trowel
KS02437	WOA	22" XT JOINERS SAW



SCAFFOLD TOOLS

KS02000	0.60	Scaffold Wrench 21mm
KS02002	WOA	Ratchet Podger 21mm
KS02003	0.20	Scaffolders Magnetic level



SCREWDRIVERS

Flat

KS0961	0.02	Screwdriver, Mini-Tip Flat, 5.7/8"
KS0287A	0.05	Screwdriver, Flat Tip .040 x 1/4" tip, 3 3/4"
THSHD2AR	0.07	Screwdriver, Flat Tip .035 x 7/32" tip, 6 15/16"
THSHD4AR	0.11	Screwdriver, Flat Tip .040 x 1/4" tip, 8 27/32"
THSHD6AR	0.15	Screwdriver, Flat Tip .050 x 5/16" tip, 10 27/32"
THSHD8R	0.25	Screwdriver, Flat Tip .055 x 3/8" tip, 13 13/32"
KS0960	0.29	Screwdriver, Flat blade, 10"

Phillips

KS0292A	0.05	Screwdriver, Phillips, , #2 tip, 3 1/2"
THSHDP31AIRR	0.07	Screwdriver, Phillips, , #1 tip, 7.1/8"
THSHDP42AIRR	0.11	Screwdriver, Phillips, , #2 tip, 8 7/8"
THSHDP63AIRR	0.15	Screwdriver, Phillips, , #3 tip, 10 13/16"
THSHDP64AIRR	0.23	Screwdriver, Phillips, , #4 tip, 11 1/2"



Product Code	Wt Kg	Product Description
Torx		
KS0426	0.04	Screwdriver Orange Torx T15

Miniature - Flat

THSGDE215	0.02	Screwdriver, Flat Tip, Miniature, 1.5 mm tip, 5 3/4"
THSGDE220	0.02	Screwdriver, Flat Tip, Miniature, 2.0 mm tip, 5 3/4"
THSGDE225	0.02	Screwdriver, Flat Tip, Miniature, 2.5 mm tip, 5 3/4"
THSGDE230	0.02	Screwdriver, Flat Tip, Miniature, 3 mm tip, 5 3/4"

Miniature - Phillips

THSGDEP200	0.02	Screwdriver, Phillips, Miniature, #00 tip, 5 3/4"
THSGDEP20	0.02	Screwdriver, Phillips, Miniature, #0 tip, 5 3/4"
KS0340A	0.02	Screwdriver, Phillips, Miniature, #1 tip, 5 3/4"

Screw Starter

KS0643	0.11	Handle Style Screw-Starter 9.3/4"
--------	------	-----------------------------------

Potentiometer Adjust

KS0697	0.01	Potentiometer Adjusting Screwdriver
--------	------	-------------------------------------

HAMMERS

Special Purpose

KS02520	WOA	Boiler Scaling Hammer
---------	-----	-----------------------



Claw

KS02444	WOA	16oz/450g Estwing Claw Hammer
KS02512	WOA	20oz/570g Estwing Claw Hammer
KS02521	WOA	24oz/680g Estwing Claw Hammer
KS02445	WOA	28oz/680g Estwing Claw Hammer

Ball Peen

KS0962	0.64	Hammer, Ball/Peen, 12oz/340g, Fibreglass Handle
KS01179	0.71	Hammer Ball/Peen 16oz/450g, Fibreglass Handle
KS01164	0.64	Hammer Ball-peen 16oz/450g Dead-blow, Composite/Steel Handle
KS0320SA	1.36	Hammer, Ball/Peen, 24oz/680g, Unbreakable Handle
KS0320	0.95	Hammer, Ball/Peen, 24oz/680g, Fibreglass Handle
KS01181	1.16	Hammer Ball/Peen 32oz/900g, Fibreglass Handle
KS02313	1.27	Hammer Ball/Peen 32oz/900g Dead Blow, Composite/Steel Handle

Product Code	Wt Kg	Product Description
--------------	-------	---------------------

Cross Peen

KS02479	0.00	Hammer, Cross-Peen, 18oz/500g
KS01099	2.35	4lb/1.8kg Cross Peen Hammer, 8.3/4" Fibreglass Handle

Hand Drilling

KS0419	2.06	4lb/1.8kg, 10" Hand drilling Hammer, Fibreglass Handle
--------	------	--

Dead Blow

KS0433	0.55	16oz/450g Dead Blow Hammer, Composite/Steel Handle
KS02329	0.68	24oz/680g Dead-Blow Hammer, Composite/Steel Handle
KS02311	0.91	32oz/900g Dead Blow Hammer, Composite/Steel Handle
KS02328	1.33	48oz/1.4kg Dead-Blow Hammer, Composite/Steel Handle
KS02312	1.69	56oz/1.6kg Dead Blow Hammer, Composite/Steel Handle
KS01164	0.64	Hammer Ball-peen 16oz/450g Dead-blow, Composite/Steel Handle
KS02313	1.27	Hammer Ball/Peen 32oz/900g Dead Blow, Composite/Steel Handle



Soft Face

KS0963	1.09	24oz/680g Hammer, Soft-Face 12"/600mm Composite/Steel Handle
KS02326	0.91	24oz/680g Hammer, Bronze Faced, 12"/600mm Composite/Steel Handle
KS0696	0.70	16oz/450g Hammer, Plastic Tip, 12"/600mm Composite/Steel Handle

Welding

KS02560	WOA	Welding Hammer
---------	-----	----------------

Product Code Wt Kg Product Description

SLEDGE HAMMERS

Polymer Sleeve/Fibreglass Handle

KS01223	WOA	4lb/1.8Kg Sledge Hammer 12"/600mm Polymer Sleeve/Fibreglass Handle
KS0261-PS	3.11	6lb/2.7kg, SledgeHammer 16"/400mm Polymer Sleeve/Fibreglass Handle
KS0262-PS	5.78	10lb/4.5kg, SledgeHammer 29" Polymer Sleeve/Fibreglass Handle
KS01113	WOA	14lb/6.3Kg Sledge-Hammer 36" Polymer Sleeve/Fibreglass Handle

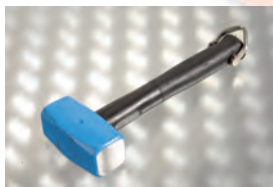


Unbreakable Handle

KS02455A	1.70	Unbreakable BASH Sledge Hammer 2.5lb/1.1kg, 12"/300mm Handle
KS0261-S	2.72	Unbreakable Sledge Hammer 4lb/1.8kg, 12"/300mm Handle
KS02438A	0.65	Unbreakable BASH Sledge Hammer 6lb/2.7Kg, 24"/600mm Handle
KS02439A	4.20	Unbreakable BASH Sledge Hammer 6lb/2.7Kg, 30"/750mm Handle
KS02440A	5.22	Unbreakable BASH Sledge Hammer 8lb/3.6Kg, 24"/600mm Handle
KS0262-S	5.78	Unbreakable Sledge Hammer 8lb/3.6kg, 30"/750mm Handle
KS02459	6.58	Unbreakable Sledge Hammer 10lb/4.5kg, 30"/750mm Handle
KS02460	7.60	Unbreakable Sledge Hammer 12lb/5.4kg, 30"/750mm Handle
KS02456A	8.62	Unbreakable BASH Sledge Hammer 14lb/6.3kg, 30"/750mm Handle

Unbreakable Handle - Soft Face Anti-Chip

KS02493A	11.09	Safety BASH Sledgehammer, 2.5lb/1.1kg, 12"/300mm, Unbreakable
KS02494	2.72	Safety Sledgehammer, 4lb/1.8kg, 12"/300mm, Unbreakable
KS02495	3.18	Safety Sledgehammer, 4lb/1.8kg, 16"/400mm, Unbreakable



Product Code Wt Kg Product Description

Unbreakable Handle - Soft Face Anti-Chip (con't)

KS02496A	4.17	Safety BASH Sledgehammer, 6lb/2.7kg, 24"/600mm, Unbreakable
KS02497	4.17	Safety Sledgehammer, 6lb/2.7kg, 30"/750mm, Unbreakable
KS02498A	5.22	Safety BASH Sledgehammer, 8lb/3.6kg, 24"/600mm, Unbreakable
KS02499	5.78	Safety Sledgehammer, 8lb/3.6kg, 30"/750mm, Unbreakable
KS02501	7.60	Safety Sledgehammer, 12lb/5.4kg, 30"/750mm, Unbreakable
KS02502	8.62	Safety Sledgehammer, 14lb/6.3kg, 30"/750mm, Unbreakable

Non-Sparking Composite/Steel Handle

KS02327	2.50	5lb/2.3kg, 20"/500mm Anti-Spark SledgeHammer, Composite/Steel Handle
KS02332	4.06	8lb/3.6kg, 30"/750mm Anti-Spark SledgeHammer, Composite/Steel Handle
KS02204	5.53	11.5lb/5.2kg 36"/900mm Anti-Spark SledgeHammer, Composite/Steel Handle

Non-Sparking Polymer Sleeve Handle

KS02335	WOA	Aluminium Bronze Anti-Spark Head, 2lb/0.9kg, 10"/250mm Polymer Sleeve/Fibreglass Handle
KS02336	WOA	Aluminium Bronze Anti-Spark Head, 4lb/1.8kg, 10"/250mm Polymer Sleeve/Fibreglass Handle
KS0264	4.00	Aluminium Bronze Anti-Spark Head, 7lb/3.2kg, 30"/750mm Polymer Sleeve/Fibreglass Handle
KS02337	WOA	Aluminium Bronze Anti-Spark Head, 10lb/4.5kg, 36"/900mm Polymer Sleeve/Fibreglass Handle
KS02338	WOA	Aluminium Bronze Anti-Spark Head, 14lb/6.3kg, 36"/900mm Polymer Sleeve/Fibreglass Handle

Product Code Wt Kg Product Description

PUNCHES/CHISELS

KS0266	0.27	Punch/Chisel Holder
KS0267	0.03	Punch, Pin, 3/32" point
KS0268	0.01	Punch, Pin, 1/8", point
KS0269	0.05	Punch, Pin 5/32" point
KS0270	0.05	Punch, Pin, 3/16" point
KS0271	0.06	Punch, Pin, 7/32" point
KS0272	0.08	Punch, Pin, 1/4" point
KS0273	0.11	Punch, Pin, 5/16" point
KS02476	WOA	Pin Punch 3/8" point
KS0446	0.07	Long Punch, Pin, 3/16" point
KS0447	0.10	Long Punch, Pin, 1/4" point
KS02595	WOA	Pin Punch, Metric, 3mm
KS02596	WOA	Pin Punch, Metric, 4mm
KS02597	WOA	Pin Punch, Metric, 5mm
KS02598	WOA	Pin Punch, Metric, 6mm
KS02599	WOA	Pin Punch, Metric, 7mm
KS02600	WOA	Pin Punch, Metric, 8mm
KS02561	WOA	Pin Punch, Metric, 10mm
KS02562	WOA	Pin Punch, Metric, 12mm
KS02563	WOA	Pin Punch, Metric, 14mm
KS02564	WOA	Pin Punch, Metric, 16mm
KS0637	0.08	Automatic Centre Punch Heavy Duty 5"/125mm
KS0969	0.04	Centre Punch, 5"/125mm, 1/8" point, 5/16" Hex



PRY-BARS

KS0265	1.52	Wrecking Bar, 24"/600mm x 3/4"/19mm
KS02315	0.05	6"/150mm Prybar
KS0638	0.20	12"/300mm Prybar
KS02316	0.45	16"/400mm Prybar
KS02524	0.85	20"/500mm Prybar
KS02330	0.11	9"/230mm Close Quarter Bar, 7/16" Tip
KS02331	0.43	16"/400mm Close Quarter Bar, 9/16" Tip
KS02733	0.75	18"/450mm Close Quarter Bar, 3/4" Tip
KS02734	1.10	20"/500mm Pinch Bar, 5/8" Edge



Striking

KS02525	0.13	8"/200mm Striking Prybar
KS02526	0.27	12"/300mm Striking Prybar
KS02527	0.45	18"/450mm Striking Prybar
KS02528	0.78	24"/600mm Striking Prybar

Product Code Wt Kg Product Description

Pry Bars (con't)

Multi-Position

KS01175	0.36	Multi-position Prybar 8"/200mm
KS01176	0.45	Multi-position Prybar 12"/300mm
KS01177	0.54	Multi-position Prybar 16"/400mm

PLIERS/CUTTERS

Pliers - Linesman

KS0201A	0.29	Pliers, Linesman, 7 3/8"/180mm
KS02227	0.53	Pliers Linesman 9.25"/235mm



Pliers - Needle Nose

KS0203A	0.12	Pliers, Needle Nose, 6" /150mm
KS0973	0.23	Pliers, Needle Nose With Cutter, 8"/200mm
KS0980	0.23	Pliers, Long Needle Nose, 8"/200mm

Pliers -Electronic

KS02857	0.1	Pliers, Electronic, Needle Nose, Wire Looper Jaws, 4 5/8"
KS02844	0.09	Pliers, Electronic, Needle Nose, 45° Angled Serrated Jaws, 6 5/8"
KS02845	0.09	Pliers, Electronic, Needle Nose, 45° Angled Serrated Jaws, 6 5/8"
KS02846	0.11	Cutters, Electronic, End Cut, True Flush 5 7/8" (AWG #19 max.)
KS02847	0.08	Cutters, Electronic, Tapered Head, True Flush 4 3/8" (AWG #17 max.)

Pliers - Locking

KS0297A	0.58	Pliers, Vise-Grip, Locking, Straight Jaw, 1 5/8"/41mm capacity
KS02743	0.17	Locking Pliers, 6"/150mm, Long Nose
KS02744	0.18	Locking Pliers, 5"/125mm, Curved jaw

Pliers - Adjustable

KS0970	1.68	Pliers, Adjustable Joint 20"/500mm
KS01088	0.19	Pliers, Combination Slip-Joint (2 position), 6"/150mm
KS01112	0.36	Adjustable Pliers 9.1/4"/235mm
KS02228	0.32	Heavy Duty Combination Adj Pliers, 7.1/2"/190mm

Product Code Wt Kg Product Description

Pliers - End Cutting

KS02519 WOA Knipex End Cutting Pliers 8"/200mm

Cutters

KS0202A 0.09 Cutters, Diagonal, 5"/125mm
 KS0972 0.20 Cutters, Diagonal, 6"/150mm
 KS0641 0.11 Electrical True Flush Cutters Tapered Head
 5.3/16"/130mm cap AWG12
 KS02846 0.11 Cutters, Electronic, End Cut, True Flush 5 7/8"
 (AWG #19 max.)
 KS02847 0.08 Cutters, Electronic, Tapered Head, True Flush 4 3/8"
 (AWG #17 max.)
 KS02229 0.34 Cutters, High Leverage 8"/200mm
 KS01218 1.54 Bolt Cutters 18"/450mm



Pliers - Wire Twisting

KS0298 0.28 Wire Twister/Cutter 8.3/4"/225mm,
 Reversible,.041" cap

Pliers - Circlip (Retaining Ring)

KS0971 0.21 Circlip Pliers Set 6.25"/160mm (Int 3/8 - 2",
 Ext 1/4 - 2") incl. various tips
 KS02749 0.23 Convertible Circlip Pliers 3/8-2" Int, 1/4-2"
 Ext, Incl. various tips

Wire Strippers

KS0639 0.41 Automatic Wire-Stripper 6"/150mm
 KS02461A 0.22 Wire Stripper/Cutter/Crimper 9"/225mm
 KS0274 0.25 Wire Stripper/Cutter/Crimper/Bolt Cutter,
 (AWG 10 to 22), 9.5"/240mm
 KS0640 0.22 Wire Stripper/Cutter/Crimper/Bolt Cutter,
 (AWG 8 to 22), 8.5"/210mm

SELF RESCUE CUTTERS

KS02846 0.11 Cutters, Electronic, End Cut, True Flush 5 7/8"
 (AWG #19 max.)
 KS02847 0.08 Cutters, Electronic, Tapered Head,
 True Flush 4 3/8"
 (AWG #17 max.)



Product Code Wt Kg Product Description**RATCHETS AND DRIVERS****Ratchets and Drivers - 1/4" drive**

KS02446	0.09	Ratchet, 1/4" Drive, Standard Handle
KS02447	0.10	Ratchet, 1/4" Drive, Soft-Grip Handle

Ratchets and Drivers - 3/8" drive

KS02300A	0.30	Ratchet 3/8"dr Dual 80
KS02302	0.35	Ratchet 3/8"dr Long Dual 80
KS02301	0.14	Ratchet 3/8"dr Flex Head Ratchet
KS01163	0.45	Speed Brace 3/8"dr
KS01025	0.15	T-Handle, 3/8" dr
KS02303	0.30	Breaker Bar, 10"/250mm, 3/8"dr

**Ratchets and Drivers - 1/2" drive**

KS02304	0.73	Ratchet 1/2"dr Dual 80
KS02305	0.88	Ratchet 1/2"dr Long Dual 80
KS02379	0.79	Ratchet, 1/2"dr, Podger end
KS01116	0.82	Extra-Long Ratchet Soft-grip Handle, Dual 80, 1/2"dr
KS01036	0.73	Speed Brace, 1/2"dr
KS01038	0.56	T-Handle 1/2" dr
KS02307	0.77	Breaker Bar, 15"/375mm, 1/2"dr
KS01114	0.91	Breaker Bar, 18"/450mm, 1/2"dr
KS01115	1.09	Breaker Bar, 24"/600mm, 1/2"dr

Ratchets and Drivers - 3/4" drive

KS02529	0.32	3/4"dr T-Handle 19"/475mm
KS02372	5.00	3/4" Ratchet head c/w 36"/900mm Handle
KS02566	WOA	3/4" Ratchet head c/w 19"/480mm Handle
KS02453	WOA	Breaker Bar, 3/4" c/w 19"/480mm Handle
KS02454	4.00	Breaker Bar, 3/4" c/w 36"/900mm Handle

Ratchets and Drivers - 1" drive

KS3189	1.28	1" Breaker Bar, 60"/1.5m Handle
KS01110	WOA	1" dr T-Bar 30"/750mm
KS02396	WOA	1" Ratchet head c/w 36"/900mm Handle

Product Code Wt Kg Product Description

HEX DRIVERS

Sets In a Holder

KS0204A	0.40	Hex Keys in metal holder - Imperial sizes
KS0205A	0.13	Hex Keys in metal holder - Metric Sizes



L-shape Metric Sizes

KS02384	WOA	1.5mm Hex Key(long)
KS02385	WOA	2mm Hex Key
KS02386	WOA	2.5mm Hex Key
KS02387	0.01	3mm Hex Key
KS02388	0.010	4mm Hex Key
KS01194	.02	5mm Hex Key
KS01195	0.05	6mm Hex Key
KS01196	0.01	7mm Hex Key
KS01197	0.05	8mm Hex Key
KS01198	0.07	9mm Hex Key
KS0364	0.09	10mm Hex Key
KS0365	0.17	12mm Hex Key
KS01199	0.25	14mm Hex Key
KS01200	0.41	17mm Hex Key
KS01201	0.59	19mm Hex Key
KS01202	WOA	22mm Hex Key
KS01203	WOA	23mm Hex Key
KS01204	WOA	24mm Hex Key

L-shape Inch Sizes

KS02356	WOA	1/16" Hex Key
KS02357	WOA	5/64" Hex Key
KS02358	0.01	3/32" Hex Key
KS02359	0.01	7/64" Hex Key
KS02360	0.01	1/8" Hex Key
KS02361	0.01	9/64" Hex Key
KS02362	0.01	5/32" Hex Key
KS01206	0.01	3/16 Hex Key
KS01207	0.02	7/32 Hex Key
KS01208	0.03	1/4 Hex Key
KS01209	0.09	5/16 Hex Key
KS01210	0.09	3/8 Hex Key
KS01211	0.13	7/16 Hex Key
KS01212	0.27	9/16 Hex Key

Product Code Wt Kg Product Description

Hex Drivers (con't)

L-shape Inch Sizes (con't)

KS01213	0.36	5/8 Hex Key
KS01214	0.60	3/4 Hex Key
KS01215	WOA	7/8" Hex Key

T-Handle Metric Sizes

KS0993	0.05	T-Handle Hex Wrench 4mm
KS02230	0.05	T-Handle Hex Wrench 5mm
KS01045	0.05	T-Handle Hex Wrench 6mm
KS02231	0.05	T-Handle Hex Wrench 8mm
KS02232	0.05	T-Handle Hex Wrench 10mm

T-Handle Metric Sizes (Ball End)

KS01182	0.05	T-Handle Hex Ball Wrench 2mm
KS01183	0.05	T-Handle Hex Ball Wrench 2.5mm
KS01184	0.05	T-Handle Hex Ball Wrench 3mm
KS01185	0.06	T-Handle Hex Ball Wrench 4mm
KS01186	0.14	T-Handle Hex Ball Wrench 5mm
KS01187	0.14	T-Handle Hex Ball Wrench 6mm
KS02606	WOA	T-Handle Hex Ball Wrench 8mm
KS02607	WOA	T-Handle Hex Ball Wrench 10mm

T-Handle Inch Sizes

KS0994	0.05	T-Handle Hex Wrench 9/64"
KS01188	0.05	T-Handle Hex Wrench 3/16"
KS01190	0.05	T-Handle Hex Wrench 1/4"
KS01191	0.05	T-Handle Hex Wrench 5/16"
KS01189	0.05	T-Handle Hex Wrench 7/32"
KS01192	0.09	T-Handle Hex Wrench 3/8"

TORX DRIVERS

KS02753	0.05	Torx Driver, T10, T-Handle
KS02754	0.05	Torx Driver, T15, T-Handle
KS02755	0.05	Torx Driver, T20, T-Handle
KS02756	0.05	Torx Driver, T25, T-Handle
KS02757	0.05	Torx Driver, T27, T-Handle
KS02758	0.05	Torx Driver, T30, T-Handle



Product Code	Wt Kg	Product Description
KS02759	0.05	Torx Driver, T40, T-Handle
KS02760	0.05	Torx Driver, T45, T-Handle
KS02761	0.05	Torx Driver, T50, T-Handle

TORQUE WRENCHES

3/8" Drive

KS0624	1.49	Torque Wrench, Adjustable Click Type, 3/8"dr, 10-50Nm
KS0625	1.50	Torque Wrench, Adjustable Click Type, 3/8"dr, 20-100Nm
KS01180	1.51	Torque Wrench, Adjustable Click Type, 3/8"dr, 5-75ft/lb

1/2" Drive

KS02415	2.17	Torque Wrench, Adjustable, 70-350Nm, 1/2"dr
KS0275	2.19	Torque Wrench, 1/2"dr, Adjustable Click-type, 50-250 ft. lb.

3/4" Drive

KS02503	8.12	Torque Wrench, Adjustable Click-type, 150-800Nm, 3/4"dr
KS0623	7.12	Torque Wrench, 3/4"dr, Fixed Head, 120-600ft.lb
KS02334	8.44	Torque Wrench, 3/4"dr, Ratchet, 120-600ft.lb
KS02751	5.00	Torque Wrench, Dial Type, 3/4"dr, 80kg.m, 600ft.lb

1" Drive

KS02374	19.55	Torque Wrench, Adjustable Click Type, 1"dr, 200-1000ft/lb
---------	-------	---

TORQUE MULTIPLIERS

3/4" Drive Ft/Lb

KS02333	6.33	Torque Multiplier, 3/4"dr, 2000ft.lb max with 3.7-1 Ratio
---------	------	---

Product Code Wt Kg Product Description**SQUARE DRIVE ADAPTORS**

THTA3	0.02	Adaptor, 1/4 - 3/8"
THA2A	0.05	Adaptor 3/8" to 1/2"
THGFAT1E	0.04	Adaptor 3/8" - 1/4"
THGSAF1E	0.09	Adaptor 1/2" - 3/8"
THGLA12B	0.16	Adaptor 1/2 - 3/4
KSo1255	0.34	Adaptor 3/4 - 1"
THGLAS1E	0.23	Adaptor 3/4 - 1/2"
KSo1257	0.54	Adaptor 1" - 3/4"

**Impact Use**

KSo2378	WOA	Impact Adaptor 1/2" - 3/4"
KSo2373	0.68	Impact Adaptor, 1" to 3/4"

**UNIVERSAL JOINTS**

THFU8A	0.06	Universal Joint, 3/8"dr
THS8	0.13	Universal Joint 1/2" dr
KSo2660	0.48	Universal Joint, 3/4"dr
KSo1108	WOA	Universal Joint, 1"dr

EXTENSIONS**1/4" drive**

THTMX1	0.02	Extension, 1", 1/4" dr
THTMXK2	0.03	Extension, 2", 1/4"dr
THTMXK4	0.05	Extension, 4", 1/4"dr
THTMXK60	0.07	Extension, 6", 1/4"dr
THTMXK110	0.12	Extension, 11", 1/4"dr

3/8" drive

THFX1	0.06	Extension 1.5"/38mm, 3/8dr
THFXK3	0.07	Extension 3"/75mm, 3/8dr
THFXK4	0.10	Extension 4"/100mm, 3/8dr
THFXK6	0.12	Extension 6"/150mm, 3/8dr
THFXK8	0.16	Extension 8"/200mm, 3/8dr
THFXK11	0.21	Extension 11"/275mm, 3/8dr
KSo1027	0.45	Extension 18"/450mm, 3/8dr
KSo1028	0.60	Extension 24"/600mm, 3/8dr

Product Code	Wt Kg	Product Description
--------------	-------	---------------------

1/2" drive

THSXX5	0.24	Extension, 5"/125mm, 1/2"dr
THSXX8	0.34	Extension, 8"/200mm, 1/2"dr
THSXX11	0.47	Extension 11"/275mm, 1/2"dr

3/4" drive

L32	WOA	Extension, 3"/75mm, 3/4"dr
L42	WOA	Extension, 5"/125mm, 3/4"dr
L62	0.79	Extension, 8"/200mm, 3/4"dr
L122	WOA	Extension, 16"/400mm, 3/4"dr

EXTENSIONS - Impact Use

1/2" drive

KS02370	0.18	Impact Extension 3", 1/2"dr
KS02371	0.25	Impact Extension 5", 1/2"dr

3/4" drive

KS02375	0.43	Impact Extension 3"/75mm, 3/4dr
KS02376	0.68	Impact Extension 7"175mm, 3/4dr
KS02377	1.07	Impact Extension 13"/625mm, 3/4dr



SOCKETS - Hand Use

1/4" Drive - Shallow - Metric Sizes - 6pt

KS02376	0.01	Socket, 4mm, 6pt, 1/4"Dr
---------	------	--------------------------

1/4" Drive - Shallow - Metric Sizes - 12pt

THTMMD6	0.01	Socket, 6mm, 12pt, 1/4"dr
THTMMD7	0.01	Socket, 7mm, 12pt, 1/4"dr
THTMMD8	0.01	Socket, 8mm, 12pt, 1/4"dr
THTMMD9	0.01	Socket, 9mm, 12pt, 1/4"dr
THTMMD10	0.01	Socket, 10mm, 12pt, 1/4"dr
THTMMD11	0.03	Socket, 11mm, 12pt, 1/4"dr
THTMMD12	0.02	Socket, 12mm, 12pt, 1/4"dr
THTMMD13	0.01	Socket, 13mm, 12pt, 1/4"dr
THTMMD14	0.03	Socket, 14mm, 12pt, 1/4"dr

Product Code Wt Kg Product Description

Sockets - Hand Use (con't)

1/4" Drive - Shallow - Inch Sizes - 12pt

THTMD6	0.01	Socket 3/16", 12pt, 1/4"dr
THTMD7	WOA	Socket 7/32", 12pt, 1/4dr
THTMD8	WOA	Socket 1/4", 12pt, 1/4dr
THTMD9	WOA	Socket 9/32", 12pt, 1/4dr
THTMD10	WOA	Socket 9/32", 12pt, 1/4dr
THTMD11	WOA	Socket 11/32", 12pt, 1/4dr
THTMD12	WOA	Socket 3/8", 12pt, 1/4dr
THTMD14	0.02	Socket, 7/16" 12pt, 1/4"dr
THTMD16	WOA	Socket 1/2", 12pt, 1/4dr
THTMD18	WOA	Socket 9/16", 12pt, 1/4dr

3/8" Drive - Shallow - Metric Sizes - 6pt

THFSM61	0.02	Socket, 6mm, 6pt, 3/8dr
THFSM71	0.02	Socket, 7mm, 6pt, 3/8dr



3/8" Drive - Shallow - Metric Sizes - 12pt

THFM8	0.02	Socket, 8mm, 3/8dr
THFM9	0.02	Socket, 9mm, 3/8dr
THFM10	0.02	Socket 10mm, 3/8"dr
THFM11	0.02	Socket 11mm, 3/8"dr
THFM12	0.02	Socket, 12mm, 3/8dr
THFM13	0.02	Socket, 13mm, 3/8dr
THFM14	0.03	Socket, 14mm, 3/8dr
THFM15	0.03	Socket, 15mm, 3/8dr
THFM16	0.04	Socket, 16mm, 3/8dr
THFM17	0.05	Socket, 17mm, 3/8"dr
THFM19	0.06	Socket, 19mm, 3/8"dr
KSo1007	0.09	Socket, 22mm, 3/8"dr
KSo1008	0.11	Socket, 24mm, 3/8"dr

3/8" Drive - Shallow - Inch Sizes - 12pt

THFo81	0.02	Socket, 1/4", 3/8"dr
THF101	0.02	Socket, 5/16", 3/8"dr
THF111	0.02	Socket, 11/32", 3/8"dr
THF121	0.02	Socket, 3/8", 3/8"dr
THF141	0.02	Socket, 7/16", 3/8"dr
THF161	0.02	Socket, 1/2", 3/8"dr
THF181	0.03	Socket, 9/16", 3/8"dr
	0.04	
36	0.05	

Product Code	Wt Kg	Product Description
THF201	0.04	Socket, 5/8", 3/8"dr
THF221	0.05	Socket, 11/16", 3/8"dr
THF241	0.06	Socket, 3/4", 3/8"dr
THF261	WOA	Socket, 13/16", 3/8"dr
THF281	WOA	Socket, 7/8", 3/8"dr

1/2" Drive - Shallow - Metric Sizes - 6pt

KS01237	0.25	Socket, 22mm, 1/2"dr
KS01238	0.26	Socket, 23mm, 1/2"dr
KS01239	0.27	Socket, 24mm, 1/2"dr
KS01240	0.29	Socket, 25mm, 1/2"dr
KS01241	0.32	Socket, 26mm, 1/2"dr
KS01242	0.35	Socket, 27mm, 1/2"dr
KS01243	0.39	Socket, 28mm, 1/2"dr
KS01244	0.45	Socket, 29mm, 1/2"dr
KS01245	0.45	Socket, 30mm, 1/2"dr
KS01246	0.49	Socket, 31mm, 1/2"dr
KS01247	0.49	Socket, 32mm, 1/2"dr

1/2" Drive - Shallow - Metric Sizes - 12pt

THSWM101A	0.06	Socket 10mm, 1/2"dr
THSWM111A	0.06	Socket 11mm, 1/2"dr
THSWM121A	0.06	Socket 12mm, 1/2"dr
THSWM131A	0.06	Socket 13mm, 1/2"dr
THSWM141A	0.06	Socket 14mm, 1/2"dr
THSWM151A	0.07	Socket 15mm, 1/2"dr
THSWM161	0.06	Socket 16mm, 1/2"dr
THSWM171	0.07	Socket 17mm, 1/2"dr
THSWM181	0.07	Socket 18mm, 1/2"dr
THSWM191	0.08	Socket 19mm, 1/2"dr
THSWM201	0.08	Socket 20mm, 1/2"dr
THSWM211	0.10	Socket 21mm, 1/2"dr
THSWM221	0.10	Socket 22mm, 1/2"dr
THSWM231	0.11	Socket 23mm, 1/2"dr
THSWM241	0.13	Socket 24mm, 1/2"dr
KS02246	0.14	Socket 25mm, 1/2"dr
KS02426	0.16	Socket 26mm, 1/2"dr
THSWM271	0.18	Socket 27mm, 1/2"dr
KS02427	0.20	Socket 28mm, 1/2"dr
KS02247	0.23	Socket 29mm, 1/2"dr
THSWM301	0.25	Socket 30mm, 1/2"dr
KS02428	0.30	Socket 31mm, 1/2"dr
THSWM321	0.27	Socket 32mm, 1/2"dr



Product Code Wt Kg Product Description

Sockets - Hand Use (con't)

1/2" Drive - Deep - Metric Sizes - 12pt

THSM13A	0.11	Socket 13mm, Deep, 1/2"dr
THSM14A	0.14	Socket 14mm, Deep, 1/2"dr
THSM15A	0.16	Socket 15mm, Deep, 1/2"dr
THSM16	0.14	Socket 16mm, Deep, 1/2"dr
THSM17	0.16	Socket 17mm, Deep, 1/2"dr
THSM18	0.17	Socket 18mm, Deep, 1/2"dr
THSM19	0.18	Socket 19mm, Deep, 1/2"dr
THSM20	0.18	Socket 20mm, Deep, 1/2"dr
THSM21	0.20	Socket 21mm, Deep, 1/2"dr
THSM22	0.23	Socket 22mm, Deep, 1/2"dr
THSM23	0.25	Socket 23mm, Deep, 1/2"dr
THSM24	0.27	Socket 24mm, Deep, 1/2"dr
KSo2292	0.27	Socket 25mm, Deep, 1/2"dr
KSo2293	0.30	Socket 26mm, Deep, 1/2"dr
KSo2294	0.32	Socket 27mm, Deep, 1/2"dr
KSo2295	0.39	Socket 28mm, Deep, 1/2"dr
KSo2296	0.45	Socket 29mm, Deep, 1/2"dr
KSo2297	0.45	Socket 30mm, Deep, 1/2"dr
KSo2298	0.48	Socket 31mm, Deep, 1/2"dr
KSo2299	0.47	Socket 32mm, Deep, 1/2"dr
KSo1107	0.00	Socket, 36mm Deep, 1/2"dr



1/2" Drive - Shallow - Inch Sizes - 12pt

KSo237	0.05	Socket, 5/16", 1/2"dr
THSW121A	0.06	Socket 3/8", 1/2"dr
THSW161A	0.06	Socket 1/2", 1/2"dr
THSW181A	0.06	Socket 9/16", 1/2"dr
THSW201	0.06	Socket 5/8", 1/2"dr
THSW221	0.07	Socket 11/16", 1/2"dr
THSW241	0.08	Socket 3/4", 1/2"dr
THSW261	0.09	Socket 13/16", 1/2"dr
THSW281	0.09	Socket 7/8", 1/2"dr
THSW301	0.13	Socket 15/16", 1/2"dr
THSW321	0.14	Socket 1", 1/2"dr
THSW341	0.18	Socket 1.1/16", 1/2"dr
THSW361	0.20	Socket 1.1/8", 1/2"dr
THSW381	0.25	Socket 1.3/16", 1/2"dr
THSW401	0.27	Socket 1.1/4", 1/2"dr



Product Code	Wt Kg	Product Description
THSW421	0.30	Socket 1.5/16", 1/2"dr
KSo2261	0.32	Socket 1.3/8", 1/2"dr
KSo2262	0.43	Socket 1.7/16", 1/2"dr
THSW481	0.45	Socket 1.1/2", 1/2"dr

1/2" Drive - Deep - Inch Sizes - 12pt

THS181A	0.14	Socket 9/16", Deep, 1/2"dr
THS201	0.13	Socket 5/8", Deep, 1/2"dr
THS221	0.16	Socket 11/16", Deep, 1/2"dr
THS241	0.18	Socket 3/4", Deep, 1/2"dr
THS261	0.20	Socket 13/16", Deep, 1/2"dr
THS281	0.23	Socket 7/8", Deep, 1/2"dr
THS301	0.27	Socket 15/16", Deep, 1/2"dr
THS321	0.30	Socket 1", Deep, 1/2"dr
THS341	0.34	Socket 1.1/16", Deep, 1/2"dr
THS361	0.39	Socket 1.1/8", Deep, 1/2"dr
KSo2274	0.45	Socket 1.3/16", Deep, 1/2"dr
KSo2275	0.48	Socket 1.1/4", Deep, 1/2"dr
KSo2276	0.45	Socket 1.5/16", Deep, 1/2"dr
KSo2277	0.47	Socket 1.3/8", Deep, 1/2"dr
KSo2278	0.57	Socket 1.7/16", Deep, 1/2"dr
KSo2279	0.59	Socket 1.1/2", Deep, 1/2"dr

1/2" Drive - WHITWORTH Sizes - 12pt Shallow

KSo1062	WOA	Socket 1/8"W, 1/2"dr
KSo1063	WOA	Socket 3/16"W, 1/2"dr
KSo1064	WOA	Socket 1/4"W, 1/2"dr
KSo1065	WOA	Socket 5/16"W, 1/2"dr
KSo1066	WOA	Socket 3/8"W, 1/2"dr
KSo1067	WOA	Socket 7/16"W, 1/2"dr
KSo1068	WOA	Socket 1/2"W, 1/2"dr
KSo1069	WOA	Socket 9/16"W, 1/2"dr
KSo1070	WOA	Socket 5/8"W, 1/2"dr
KSo1071	WOA	Socket 11/16"W, 1/2"dr
KSo1072	WOA	Socket 3/4"W, 1/2"dr
KSo1073	WOA	Socket 13/16"W, 3/4"dr
KSo1074	WOA	Socket 7/8"W, 3/4"dr
KSo1075	WOA	Socket 15/16"W, 3/4"dr
KSo1076	WOA	Socket 1"W, 3/4"dr

Product Code Wt Kg Product Description

Sockets - Hand Use (con't)

1/2" Drive - WHITWORTH Sizes - 12pt Deep

KSo2794	WOA	Socket, Deep, 5/16"W, 1/2"dr
KSo2795	WOA	Socket, Deep, 3/8"W, 1/2"dr
KSo2796	WOA	Socket, Deep, 7/16"W, 1/2"dr
KSo2797	WOA	Socket, Deep, 1/2"W, 1/2"dr
KSo2798	WOA	Socket, Deep, 9/16"W, 1/2"dr
KSo2799	WOA	Socket, Deep, 5/8"W, 1/2"dr
KSo2800	WOA	Socket, Deep, 11/16"W, 1/2"dr
KSo2801	WOA	Socket, Deep, 3/4"W, 1/2"dr

3/4" Drive - Shallow - Metric Sizes - 12pt

KSo2339	WOA	Socket, 34mm, 3/4"dr
KSo2340	WOA	Socket, 36mm, 3/4"dr
KSo2341	WOA	Socket, 38mm, 3/4"dr
KSo2342	WOA	Socket, 41mm, 3/4"dr
KSo2343	WOA	Socket, 46mm, 3/4"dr
KSo2344	WOA	Socket, 50mm, 3/4"dr

3/4" Drive - Shallow - Inch Sizes - 12pt

KSo2640	WOA	Socket, 12pt, 1" 3/4"dr
KSo2641	WOA	Socket, 12pt, 1.1/16" 3/4"dr
KSo2642	WOA	Socket, 12pt, 1.1/8" 3/4"dr
KSo2643	WOA	Socket, 12pt, 1.3/16" 3/4"dr
KSo2644	WOA	Socket, 12pt, 1.1/4" 3/4"dr
KSo2645	WOA	Socket, 12pt, 1.5/16" 3/4"dr
KSo2646	WOA	Socket, 12pt, 1.3/8" 3/4"dr
KSo2647	WOA	Socket, 12pt, 1.7/16" 3/4"dr
KSo2648	WOA	Socket, 12pt, 1.1/2" 3/4"dr
KSo2649	WOA	Socket, 12pt, 1.9/16" 3/4"dr
KSo2650	WOA	Socket, 12pt, 1.5/8" 3/4"dr
KSo2651	WOA	Socket, 12pt, 1.11/16" 3/4"dr
KSo2652	WOA	Socket, 12pt, 1.3/4" 3/4"dr
KSo2653	WOA	Socket, 12pt, 1.13/16" 3/4"dr
KSo2654	WOA	Socket, 12pt, 1.7/8" 3/4"dr
KSo2655	WOA	Socket, 12pt, 2" 3/4"dr

Product Code Wt Kg Product Description

SOCKETS - Impact Use

1/2" Drive - Metric Sizes - 6pt - Impact

IMM100A	WOA	Impact Socket, 6pt, , 1/2"dr, 10mm
IMM110A	WOA	Impact Socket, 6pt, , 1/2"dr, 11mm
IMM120A	WOA	Impact Socket, 6pt, , 1/2"dr, 12mm
IMM130A	WOA	Impact Socket, 6pt, , 1/2"dr, 13mm
IMM140A	WOA	Impact Socket, 6pt, , 1/2"dr, 14mm
IMM150A	WOA	Impact Socket, 6pt, , 1/2"dr, 15mm
IMM160A	WOA	Impact Socket, 6pt, , 1/2"dr, 16mm
IMM170A	WOA	Impact Socket, 6pt, , 1/2"dr, 17mm
IMM180	WOA	Impact Socket, 6pt, , 1/2"dr, 18mm
IMM190	WOA	Impact Socket, 6pt, , 1/2"dr, 19mm
IMM200	WOA	Impact Socket, 6pt, , 1/2"dr, 20mm
IMM210	WOA	Impact Socket, 6pt, , 1/2"dr, 21mm
IMM220	WOA	Impact Socket, 6pt, , 1/2"dr, 22mm
IMM230	WOA	Impact Socket, 6pt, , 1/2"dr, 23mm
IMM240	WOA	Impact Socket, 6pt, , 1/2"dr, 24mm
IMM250	WOA	Impact Socket, 6pt, , 1/2"dr, 25mm
IMM260	WOA	Impact Socket, 6pt, , 1/2"dr, 26mm
IMM270	WOA	Impact Socket, 6pt, , 1/2"dr, 27mm
IMM290	WOA	Impact Socket, 6pt, , 1/2"dr, 28mm
IMM300	WOA	Impact Socket, 6pt, , 1/2"dr, 30mm
IMM320	WOA	Impact Socket, 6pt, , 1/2"dr, 32mm
IMM340	WOA	Impact Socket, 6pt, , 1/2"dr, 34mm
IMM360	WOA	Impact Socket, 6pt, , 1/2"dr, 36mm
IMM460	WOA	Impact Socket, 6pt, , 1/2"dr, 46mm

1/2" Drive - Inch Sizes - 6pt - Impact

IM120A	WOA	Impact Socket, 6pt, , 1/2"dr, 3/8"
IM140A	WOA	Impact Socket, 6pt, , 1/2"dr, 7/16"
IM160A	WOA	Impact Socket, 6pt, , 1/2"dr, 1/2"
IM180	WOA	Impact Socket, 6pt, , 1/2"dr, 5/16"
IM200	WOA	Impact Socket, 6pt, , 1/2"dr, 1/2"
IM220	WOA	Impact Socket, 6pt, , 1/2"dr, 11/16"
IM240	WOA	Impact Socket, 6pt, , 1/2"dr, 3/4"
IM260	WOA	Impact Socket, 6pt, , 1/2"dr, 13/16"
IM280	WOA	Impact Socket, 6pt, , 1/2"dr, 7/8"
IM300	WOA	Impact Socket, 6pt, , 1/2"dr, 15/16"
IM320	WOA	Impact Socket, 6pt, , 1/2"dr, 1"
IM340	WOA	Impact Socket, 6pt, , 1/2"dr, 1.1/16"
IM360	WOA	Impact Socket, 6pt, , 1/2"dr, 1.1/8"

Product Code Wt Kg Product Description**Sockets - Impact Use (con't)****1/2" Drive - Inch Sizes - 6pt - Impact (con't)**

IM380	WOA	Impact Socket, 6pt, , 1/2"dr, 1.3/16"
IM400	WOA	Impact Socket, 6pt, , 1/2"dr, 1.1/4"
IM420H	WOA	Impact Socket, 6pt, , 1/2"dr, 1.5/16"
IM440	WOA	Impact Socket, 6pt, , 1/2"dr, 1.3/8"
IM460	WOA	Impact Socket, 6pt, , 1/2"dr, 7/16"
IM480	WOA	Impact Socket, 6pt, , 1/2"dr, 1.1/2"
IM500	WOA	Impact Socket, 6pt, , 1/2"dr, 1.9/16"

3/4" Drive - Metric Sizes - 6pt - Impact

IMM172A	0.30	Impact Socket,, 3/4"dr, 17mm
IMM182A	0.30	Impact Socket,, 3/4"dr, 18mm
IMM192A	0.30	Impact Socket,, 3/4"dr, 19mm
IMM202A	0.32	Impact Socket,, 3/4"dr, 20mm
IMM212A	0.34	Impact Socket,, 3/4"dr, 21mm
IMM222A	0.34	Impact Socket,, 3/4"dr, 22mm
IMM232A	0.34	Impact Socket,, 3/4"dr, 23mm
IMM242A	0.34	Impact Socket,, 3/4"dr, 24mm
IMM252A	0.34	Impact Socket,, 3/4"dr, 25mm
IMM262A	0.34	Impact Socket,, 3/4"dr, 26mm
IMM272A	0.34	Impact Socket,, 3/4"dr, 27mm
IMM282	0.39	Impact Socket,, 3/4"dr, 28mm
IMM292	0.34	Impact Socket,, 3/4"dr, 29mm
IMM302	0.43	Impact Socket,, 3/4"dr, 30mm
IMM312	0.43	Impact Socket,, 3/4"dr, 31mm
IMM322	0.48	Impact Socket,, 3/4"dr, 32mm
IMM332	0.48	Impact Socket,, 3/4"dr, 33mm
IMM342	0.45	Impact Socket,, 3/4"dr, 34mm
IMM352	0.57	Impact Socket,, 3/4"dr, 35mm
IMM362	0.57	Impact Socket,, 3/4"dr, 36mm
IMM382	0.59	Impact Socket,, 3/4"dr, 38mm
IMM402	0.73	Impact Socket,, 3/4"dr, 40mm
IMM412	0.77	Impact Socket,, 3/4"dr, 41mm
IMM462	0.79	Impact Socket,, 3/4"dr, 46mm
IMM502	0.97	Impact Socket,, 3/4"dr, 50mm
KSo2351	WOA	Impact Socket,, 3/4"dr, 52mm
KSo2352	WOA	Impact Socket,, 3/4"dr, 54mm
KSo2353	WOA	Impact Socket,, 3/4"dr, 55mm
KSo2354	WOA	Impact Socket,, 3/4"dr, 60mm

Product Code Wt Kg Product Description

3/4" Drive - Inch Sizes - 6pt - Impact

IM182A	0.25	Impact Socket, 6pt, , 3/4"dr, 9/16"
IM202A	0.28	Impact Socket, 6pt, , 3/4"dr, 5/8"
IM222A	0.29	Impact Socket, 6pt, , 3/4"dr, 11/16"
IM242A	0.32	Impact Socket, 6pt, , 3/4"dr, 3/4"
IM262A	0.32	Impact Socket, 6pt, , 3/4"dr, 13/16"
IM282A	0.32	Impact Socket, 6pt, , 3/4"dr, 7/8"
IM302A	0.34	Impact Socket, 6pt, , 3/4"dr, 15/16"
IM322A	0.35	Impact Socket, 6pt, , 3/4"dr, 1"
IM342A	0.36	Impact Socket, 6pt, , 3/4"dr, 1.1/16"
IM362	0.39	Impact Socket, 6pt, , 3/4"dr, 1.1/8"
IM382	0.43	Impact Socket, 6pt, , 3/4"dr, 1.3/16"
IM402	0.50	Impact Socket, 6pt, , 3/4"dr, 1.1/4"
IM422	0.11	Impact Socket, 6pt, , 3/4"dr, 1.5/16"
IM442	0.57	Impact Socket, 6pt, , 3/4"dr, 1.3/8"
IM462	0.57	Impact Socket, 6pt, , 3/4"dr, 1.7/16"
IM482	0.58	Impact Socket, 6pt, , 3/4"dr, 1.1/2"
IM502	0.65	Impact Socket, 6pt, , 3/4"dr, 1.9/16"
IM522	0.67	Impact Socket, 6pt, , 3/4"dr, 1.5/8"
IM542	0.75	Impact Socket, 6pt, , 3/4"dr, 1.11/16"
IM562	0.77	Impact Socket, 6pt, , 3/4"dr, 1.3/4"
IM582	0.79	Impact Socket, 6pt, , 3/4"dr, 1.13/16"
IM602	0.86	Impact Socket, 6pt, , 3/4"dr, 1.7/8"
IM622A	1.13	Impact Socket, 6pt, , 3/4"dr, 1.15/16"
IM642A	0.98	Impact Socket, 6pt, , 3/4"dr, 2"

1" Drive - Inch Sizes - 6pt - Impact

IM643	1.47	Impact Socket, 2", 1"dr
IM663	1.41	Impact Socket, 2.1/16", 1"dr
IM683	1.61	Impact Socket, 2.1/8", 1"dr
IM703	1.75	Impact Socket, 2.3/16", 1"dr
IM723	1.70	Impact Socket, 2.1/4", 1"dr
IM743	1.95	Impact Socket, 2.5/16", 1"dr
IM763	2.09	Impact Socket, 2.3/8", 1"dr
IM783	1.97	Impact Socket, 2.7/16", 1"dr
IM803	2.00	Impact Socket, 2.1/2", 1"dr

Product Code Wt Kg Product Description

FEMALE HEX SOCKET DRIVERS

3/8" drive - Metric

THFAM4E	0.03	Socket driver, Hex 4mm, 3/8"dr
THFAM5E	0.03	Socket driver, Hex 5 mm , 3/8"dr
THFAM8E	0.05	Socket Driver, Hex, 8mm, 3/8" dr

3/8" drive - Inch

THFA8E	0.04	Socket driver, Hex 1/4", 3/8"dr
THFA10E	0.05	Socket driver, Hex 5/16", 3/8" dr
THFA12E	0.06	Socket driver, Hex 3/8", 3/8"dr

1/2" drive - Metric

THSAM6E	0.08	Socket driver, Hex, 6 mm, 1/2" dr
THSAM8E	0.09	Socket driver, Hex, 8 mm, 1/2"dr
THSAM10E	0.10	Socket driver, Hex, 10 mm , 1/2"dr
THSAM12E	0.15	Socket driver, Hex 12 mm , 1/2"dr
THSAM14E	0.20	Socket driver, Hex 14 mm, 1/2"dr
THSAM17E	0.34	Socket driver, Hex, 17 mm, 1/2"dr
THSAM19E	0.48	Socket driver, Hex, 19 mm, 1/2"dr

1/2" drive - Inch

THSA10E	0.09	Socket driver Hex, 5/16", 1/2"dr
THSA12E	0.11	Socket driver Hex, 3/8", 1/2"dr
THSA14E	0.14	Socket driver, Hex 7/16", 1/2"dr
THSA16E	0.16	Socket driver, Hex 1/2", 1/2"dr
THSA18E	0.20	Socket driver, Hex 9/16" 1/2"dr
THSA20E	0.32	Socket driver, Hex 5/8", 1/2"dr
THSA24E	0.47	Socket driver, Hex 3/4", 1/2"dr

3/4" drive - Metric

KSo2442	WOA	Socket Driver, Hex, 22mm, 3/4"dr
---------	-----	----------------------------------

1" drive - Inch

KSo2443	WOA	Socket Driver, Hex, 27mm, 1"dr
---------	-----	--------------------------------

1" drive - Inch

KSo2393	WOA	Socket Driver, Hex 1.1/4", 1"dr
KSo2394	WOA	Socket Driver, Hex 1.3/8", 1"dr
KSo2395	WOA	Socket Driver, Hex 1.7/8", 1"dr



Product Code	Wt Kg	Product Description
--------------	-------	---------------------

RATCHETING WRENCHES

Single Ring End - Metric Sizes

KS01111	WOA	36mm Single-End Ratchet Wrench
---------	-----	--------------------------------

Combination Ratcheting - Metric Sizes

KS02403	0.03	6mm Combination Ratchet Wrench
KS02404	0.02	7mm Combination Ratchet Wrench
KS02405	0.04	8mm Combination Ratchet Wrench
KS01165	0.05	9mm Combination Ratchet-Wrench
KS0424A	0.06	10mm Combination Ratchet Wrench
KS01166	0.07	11mm Combination Ratchet-Wrench
KS01167	0.08	12mm Combination Ratchet-Wrench
KS0425A	0.10	13mm Combination Ratchet Wrench
KS01168A	0.11	14mm Combination Ratchet-Wrench
KS01169	0.14	15mm Combination Ratchet-Wrench
KS01170	0.17	16mm Combination Ratchet-Wrench
KS01171A	0.19	17mm Combination Ratchet-Wrench
KS01172	0.77	18mm Combination Ratchet-Wrench
KS01173	0.25	19mm Combination Ratchet-Wrench
KS02406	0.34	21mm Combination Ratchet Wrench
KS02407	0.41	22mm Combination Ratchet Wrench
KS02408	0.50	24mm Combination Ratchet Wrench
KS02409	0.57	25mm Combination Ratchet Wrench

Ratcheting Ring - Metric Sizes

KS02601	WOA	Ratchet Ring Wrench 10-11mm, 25deg offset
KS02602	WOA	Ratchet Ring Wrench 12-13mm, 25deg offset
KS02603	WOA	Ratchet Ring Wrench 14-15mm, 25deg offset
KS02604	WOA	Ratchet Ring Wrench 16-17mm, 25deg offset
KS02605	WOA	Ratchet Ring Wrench 18-19mm, 25deg offset

Ratcheting Podger Wrenches - Metric Sizes

KS02402	WOA	24/30mm Ratchet Podger
KS02410	WOA	19/24mm Ratchet Podger
KS02762	WOA	19/22mm Ratchet Podger

STRIKING WRENCHES

Ring End - Metric Sizes

KS02805	WOA	22mm Striking Ring wrench
KS01123	0.25	24mm Striking Ring Wrench

Product Code Wt Kg Product Description**STRIKING WRENCHES (Con't)****Ring End - Metric Sizes (con't)**

KS01124	0.32	27mm Striking Ring Wrench
KS01125	0.45	30mm Striking Ring Wrench
KS01126	0.45	32mm Striking Ring Wrench
KS0604	0.46	34mm Striking Ring Wrench
KS01127	0.55	36mm Striking Ring Wrench
KS02763	0.00	38mm Striking Ring Wrench
KS0608	0.71	41mm Striking Ring wrench
KS0609	0.98	46mm Striking Ring wrench
KS0610	1.05	50mm Striking Ring wrench
KS0611	1.41	55mm Striking Ring wrench
KS0612	1.64	60mm Striking Ring wrench
KS0982	1.96	65mm Striking Ring wrench
KS0983	2.92	70mm Striking Ring wrench
KS0984	2.69	75mm Striking Ring wrench
KS0985	3.92	80mm Striking Ring wrench
KS0986	3.79	85mm Striking Ring wrench

**Open End - Metric Sizes**

KS01120	WOA	50mm Open End Striking Wrench
KS01121	WOA	55mm Open End Striking Wrench
KS01122	WOA	60mm Open End Striking Wrench
KS0987	4.62	65mm Open End Striking Wrench
KS0988	4.20	70mm Open End Striking Wrench
KS0989	5.97	75mm Open End Striking Wrench
KS0990	5.56	80mm Open End Striking Wrench
KS0991	3.79	85mm Open End Striking Wrench

Inch Sizes

KS02661	WOA	Striking Wrench 7/8", 12pt, Ring
KS02662	WOA	Striking Wrench 1", 12pt, Ring
KS02185	WOA	Striking Wrench 1.1/8", 12pt, Ring
KS02186	WOA	Striking Wrench 1.3/16", 12pt, Ring
KS02187	WOA	Striking Wrench 1.1/4", 12pt, Ring
KS02188	WOA	Striking Wrench 1.5/16", 12pt, Ring
KS02663	1.28	Striking Wrench 1.3/8", 12pt, Ring
KS02190	WOA	Striking Wrench 1.7/16", 12pt, Ring
KS02664	1.41	Striking Wrench 1.5/8", 12pt, Ring
KS02665	1.48	Striking Wrench 1.7/8", 12pt, Ring
KS02666	5.10	Striking Wrench 3", 12pt, Ring

Product Code Wt Kg Product Description

WRENCHES

Open End - Inch Sizes

KS01046	0.69	1.5/16" x 1.1/2" Open End Wrench
KS02745	0.06	7/16" - 1/2" Open End Wrench

Open End - WHITWORTH Sizes

KS0957	WOA	1/2 - 9/16W Open End Wrench
KS0958	WOA	5/8 - 9/16W Open End Wrench

Open End - Metric Sizes

KS02828	0.02	Double Open End Wrench 6-7mm
KS02829	0.03	Double Open End Wrench 7-8mm
KS02830	0.04	Double Open End Wrench 10-11mm
KS02831	0.07	Double Open End Wrench 12-13mm
KS02832	0.1	Double Open End Wrench 14-15mm
KS02833	0.15	Double Open End Wrench 16-18mm
KS02834	0.17	Double Open End Wrench 17-19mm
KS02835	0.26	Double Open End Wrench 19-22mm
KS02836	0.3	Double Open End Wrench 21-24mm
KS02837	0.34	Double Open End Wrench 22-24mm
KS02838	0.59	Double Open End Wrench 27-30mm
KS02839	0.75	Double Open End Wrench 30-32mm



Ring End - Metric Sizes - 10deg Offset

THXSM67A	0.02	Ring Wrench 6mm- 7mm (short)
KS02465	0.03	Ring Wrench 8mm- 9mm (short)
KS02466	0.09	Ring Wrench 10mm- 12mm
THXBM1113A	0.10	Ring Wrench 11mm- 13mm
THXBM1214A	0.11	Ring Wrench 12mm- 14mm
THXBM1315A	0.15	Ring Wrench 13mm- 15mm
THXBM1719A	0.22	Ring Wrench 17mm- 19mm
THXBM1821A	0.26	Ring Wrench 18mm- 21mm
THXBM2224A	0.40	Ring Wrench 22mm- 24mm
THXBM2730A	0.66	Ring Wrench 27mm- 30mm

Product Code Wt Kg Product Description

Ring End - Inch Sizes - 10deg Offset

THXID1618A	0.02	Wrench, Ring, Midget, 1/4"-9/32",
THXID2022A	0.03	Wrench, Ring, Midget, 5/16"-11/32",
THXB1214A	0.08	Wrench, Ring, 3/8"-7/16",
KSo437	0.10	Wrench, Ring, 7/16" - 1/2"
THXB1618A	0.13	Wrench, Ring, 1/2"-9/16",
KSo436	0.08	Wrench, Ring, 1/2" - 9/16" short-Handle
KSo434	0.24	Wrench, Ring, 9/16" - 5/8"
THXB2022A	0.20	Wrench, Ring, 5/8"-11/16",
KSo435	0.24	Wrench, Ring, 11/16" - 3/4"
THXB2426A	0.29	Wrench, Ring, 3/4"-13/16",
THXB2830A	0.38	Wrench, Ring, 7/8"-15/16",
KSo2483	0.48	Wrench Ring 15/16" - 1"
THXB3234A	0.55	Wrench, Ring, 1"-1 1/16",
KSo2484	0.77	Wrench Ring 1.1/16" - 1.1/4"
KSo622	0.70	Wrench, Ring, 1 1/8"-1 3/16"
THXB4042A	0.89	Wrench, Ring, 1 1/4"-1 5/16",
KSo2485	1.16	Wrench Ring 1.3/8" - 1.7/16"
KSo2486	1.47	Wrench Ring 1.1/2" - 1.5/8"

Combination - Metric Sizes

KSo2418	0.03	6mm Midget Combination Wrench
KSo2419	0.01	7mm Midget Combination Wrench
THOEXM80B	0.03	8mm Combination Wrench
THOEXM90B	0.04	9mm Combination Wrench
THOEXM100B	0.05	10mm Combination Wrench
THOEXM110B	0.06	11mm Combination Wrench
THOEXM120B	0.07	12mm Combination Wrench
THOEXM130B	0.08	13mm Combination Wrench
THOEXM140B	0.09	14mm Combination Wrench
THOEXM150B	0.11	15mm Combination Wrench
THOEXM160B	0.14	16mm Combination Wrench
THOEXM170B	0.16	17mm Combination Wrench
THOEXM180B	0.20	18mm Combination Wrench
THOEXM190B	0.20	19mm Combination Wrench
THOEXM200B	0.24	20mm Combination Wrench
THOEXM210B	0.28	21 mm Combination Wrench
THOEXM220B	0.30	22mm Combination Wrench
THOEXM230B	0.35	23mm Combination Wrench
THOEXM240B	0.37	24mm Combination Wrench
THOEXM250B	0.45	25mm Combination Wrench



Product Code	Wt Kg	Product Description
THOEXM260B	0.45	26mm Combination Wrench
THOEXM270B	0.50	27mm Combination Wrench
KS0384	0.40	28mm Combination Wrench
THOEXM290B	0.64	29mm Combination Wrench
THOEXM300B	0.65	30mm Combination Wrench
THOEXM320B	0.80	32mm Combination Wrench
THOEXM340B	0.95	34mm Combination Wrench
THOEXM360B	1.18	36mm Combination Wrench
KS0959	1.06	41mm Combination Wrench
KS02750	WOA	42mm Combination Wrench
KS0356	1.85	46mm Combination Wrench
KS02768	2.00	50mm Combination Wrench
KS02514	0.34	55mm Combination Wrench
KS02771	WOA	58mm Combination Wrench
KS02769	4.90	65mm Combination Wrench
KS02735	0.34	60mm Combination Wrench
KS02770	5.80	70mm Combination Wrench
KS02840	WOA	75mm Combination Wrench

Combination - Inch Sizes

KS02355	0.01	3/16" Combination Wrench
THOEX8B	0.02	1/4" Combination Wrench
THOEX10B	0.03	5/16" Combination Wrench
THOEX11B	0.04	11/32" Combination Wrench
THOEX12B	0.05	3/8" Combination Wrench
THOEX14B	0.06	7/16" Combination Wrench
THOEX16B	0.08	1/2" Combination Wrench
THOEX18B	0.10	9/16" Combination Wrench
THOEX20B	0.10	5/8" Combination Wrench
THOEX22B	0.18	11/16" Combination Wrench
THOEX24B	0.23	3/4" Combination Wrench
THOEX26B	0.27	13/16" Combination Wrench
THOEX28B	0.31	7/8" Combination Wrench
THOEX30B	0.38	15/16" Combination Wrench
THOEX32B	0.45	1" Combination Wrench
THOEX34B	0.53	1.1/16" Combination Wrench
THOEX36B	0.63	1.1/8" Combination Wrench
THOEX38B	0.68	1.3/16" Combination Wrench
THOEX40B	0.84	1.1/4" Combination Wrench
THOEX42B	0.91	1.5/16" Combination Wrench
THOEX44B	1.03	1.3/8" Combination Wrench
KS0431	1.33	1.1/2" Combination Wrench
THOEX46B	1.16	1.7/16" Combination Wrench
THOEX50B	1.55	1.9/16" Combination Wrench



Product Code Wt Kg Product Description**WRENCHES (Con't)****Combination - Inch Sizes (cont)**

THOEX52B	1.59	1.5/8" Combination Wrench
KSo1117	2.35	1.11/16" Combination Wrench
KSo1118	2.60	1.3/4" Combination Wrench
KSo2480	2.94	1.13/16 Combination Wrench
KSo1119	3.13	1.7/8" Combination Wrench
KSo2381	3.67	2" Combination Wrench
KSo2382	5.28	2.1/4" Combination Wrench
KSo2517	9.86	2.15/16" Combination Wrench
KSo2518	4.80	2.3/16" Combination Wrench

Combination - Inch Sizes - Short Handle

KSo2609	WOA	1/4" Combination Wrench Short Handle
KSo2610	WOA	9/32" Combination Wrench Short Handle
KSo2611	WOA	5/16 " Combination Wrench Short Handle
KSo2612	WOA	11/32" Combination Wrench Short Handle
KSo2613	WOA	3/8" Combination Wrench Short Handle
KSo2614	WOA	7/16" Combination Wrench Short Handle
KSo2615	WOA	1/2" Combination Wrench Short Handle
KSo2616	WOA	9/16" Combination Wrench Short Handle
KSo2617	WOA	5/8" Combination Wrench Short Handle
KSo2618	WOA	11/16" Combination Wrench Short Handle
KSo2619	WOA	3/4" Combination Wrench Short Handle
KSo2620	WOA	13/16" Combination Wrench Short Handle
KSo2621	WOA	7/8" Combination Wrench Short Handle
KSo2622	WOA	15/16" Combination Wrench Short Handle
KSo2623	WOA	1" Combination Wrench Short Handle
KSo2624	WOA	1.1/16" Combination Wrench Short Handle
KSo2625	WOA	1.1/8" Combination Wrench Short Handle
KSo2626	WOA	1.3/16" Combination Wrench Short Handle
KSo2627	WOA	1.1/4" Combination Wrench Short Handle

Combination - WHITWORTH Sizes

KSo945	WOA	3/16W Combination Wrench
KSo946	WOA	1/4W Combination Wrench
KSo947	WOA	5/16W Combination Wrench
KSo948	WOA	3/8W Combination Wrench
KSo949	WOA	7/16W Combination Wrench
KSo950	WOA	1/2W Combination Wrench
KSo951	WOA	9/16W Combination Wrench

Product Code	Wt Kg	Product Description
KSo952	WOA	5/8W Combination Wrench
KSo953	WOA	11/16W Combination Wrench
KSo954	WOA	3/4W Combination Wrench
KSo955	WOA	7/8W Combination Wrench
KSo1055	WOA	1/2"W Combination Wrench
KSo1056	WOA	9/16"W Combination Wrench
KSo1057	WOA	5/8"W Combination Wrench
KSo1058	WOA	11/16"W Combination Wrench
KSo1059	WOA	3/4"W Combination Wrench
KSo1060	WOA	7/8"W Combination Wrench
KSo1061	WOA	1"W Combination Wrench
KSo1077	WOA	1/8"W Combination Wrench
KSo1078	WOA	3/16"W Combination Wrench
KSo1079	WOA	1/4"W Combination Wrench
KSo1080	WOA	5/16"W Combination Wrench
KSo1081	WOA	3/8"W Combination Wrench
KSo1082	WOA	7/16"W Combination Wrench



Flare Nut - Metric Sizes

THRXFMS1012B	0.07	Flare-Nut Wrench 10mm - 12mm
THRXFMS1314B	0.10	Flare-Nut Wrench 13mm - 14mm
THRXFMS1517B	0.15	Flare-Nut Wrench 15mm - 17mm
THRXFMS1921B	0.24	Flare-Nut Wrench 19mm - 21mm

Flare Nut - Inch Sizes

KSo439	0.06	Flare-Nut Wrench 3/8 - 7/16
KSo440	0.10	Flare-Nut Wrench 1/2 - 9/16
KSo441	0.15	Flare-Nut Wrench 5/8 - 11/16
KSo2317	0.30	Flare-Nut Wrench 3/4" - 1"

4 Way Angle - Inch Sizes

KSo2567	0.02	Wrench, 4-Way Angle Head 1/4"
KSo2568	0.02	Wrench, 4-Way Angle Head 5/16"
KSo2569	0.02	Wrench, 4-Way Angle Head 11/32"
KSo2570	0.03	Wrench, 4-Way Angle Head 3/8"
KSo2571	0.04	Wrench, 4-Way Angle Head 7/16"
KSo2572	0.05	Wrench, 4-Way Angle Head 1/2"
KSo2573	0.08	Wrench, 4-Way Angle Head 9/16"
KSo2574	0.10	Wrench, 4-Way Angle Head 5/8"
KSo2575	0.12	Wrench, 4-Way Angle Head 11/16"
KSo2576	0.15	Wrench, 4-Way Angle Head 3/4"
KSo2577	0.18	Wrench, 4-Way Angle Head 13/16"
KSo2578	0.22	Wrench, 4-Way Angle Head 7/8"
KSo2579	0.28	Wrench, 4-Way Angle Head 15/16"
KSo2580	0.33	Wrench, 4-Way Angle Head 1"

Product Code Wt Kg Product Description**WRENCHES (Con't)****4 Way Angle - Inch Sizes (con't)**

KS02581	0.34	Wrench, 4-Way Angle Head 1.1/16"
KS02582	0.44	Wrench, 4-Way Angle Head 1.1/8"
KS02583	0.48	Wrench, 4-Way Angle Head 1.3/16"
KS02584	0.55	Wrench, 4-Way Angle Head 1.1/4"
KS02585	0.62	Wrench, 4-Way Angle Head 1.5/16"
KS02586	0.71	Wrench, 4-Way Angle Head 1.3/8"
KS02587	0.78	Wrench, 4-Way Angle Head 1.7/16"
KS02588	0.90	Wrench, 4-Way Angle Head 1.1/2"
KS02589	1.10	Wrench, 4-Way Angle Head 1.5/8"
KS02590	1.19	Wrench, 4-Way Angle Head 1.11/16"
KS02591	1.30	Wrench, 4-Way Angle Head 1.3/4"
KS02592	1.53	Wrench, 4-Way Angle Head 1.13/16"
KS02593	1.58	Wrench, 4-Way Angle Head 1.7/8"
KS02594	1.94	Wrench, 4-Way Angle Head 2"

Podger Wrenches - Metric Sizes

KS01050	WOA	19mm O/E Podger Wrench
KS01051	WOA	24mm O/E Podger Wrench
KS02364	WOA	27mm Podger Wrench
KS01052	WOA	30mm O/E Podger Wrench
KS02365	WOA	32mm Podger Wrench
KS01053	WOA	36mm O/E Podger Wrench
KS02366	WOA	41mm Podger Wrench
KS02367	WOA	46mm Podger Wrench

Podger Wrenches - Imperial Sizes

KS02368	WOA	2" Podger Wrench
---------	-----	------------------

ADJUSTABLE WRENCHES

KS01193A	0.10	6"/150mm Adjustable Wrench
KS01236	0.35	8"/200mm Adjustable Wrench
KS0302	0.45	10"/250mm Adjustable Wrench
KS0417	0.68	12"/300mm Adjustable Wrench
KS01039	1.30	15"/375mm Adjustable Wrench
KS0303	2.20	18"/450mm Adjustable Wrench

Product Code	Wt Kg	Product Description
--------------	-------	---------------------

Chain Wrenches

KS01233	0.86	16"/400mm Chain Wrench
KS01234	1.23	19"/475mm Chain Wrench
KS01235	1.81	23"/580mm Chain Wrench

Pipe (Stilson) - Standard Handle

KS0992	0.18	6"/150mm Pipe Wrench
KS01054	0.37	8"/200mm Pipe Wrench
KS0323	0.11	10"/250mm Pipe Wrench
KS01232	1.36	12"/300mm Pipe Wrench
KS0372	1.66	14"/350mm Pipe Wrench
KS0373	2.63	18"/450mm Pipe Wrench



Pipe (Stilson)- Aluminium Handle

KS0606	0.50	10"/250mm Pipe Wrench, Aluminium Handle
KS0416	1.00	14"/350mm Pipe Wrench, Aluminium Handle
KS0430	1.63	18"/450mm Pipe Wrench, Aluminium Handle
KS0324	2.56	24"/600mm Pipe Wrench, Aluminum Handle
KS02205	5.10	36"/900mm Pipe Wrench Aluminium Handle
KS02206	8.23	48"/1200mm Pipe Wrench Aluminium Handle

CHAIN TONGS

KS02727	5.00	Chain Tongs 27"/675mm, 17.5" chain, cap. 1/4-2.1/4"
KS02728	10.00	Chain Tongs 37"/940mm, 22.5" chain, cap. 3/4 - 4"
KS02729	13.00	Chain Tongs 44"/1120mm, 32" chain, cap. 1 - 6"
KS02730	18.00	Chain Tongs 50"/1270mm, 40.5" chain, cap. 1.1/2 - 8"
KS02731	30.00	Chain Tongs 64"/1625mm, 55.5" chain, cap. 2 - 12"
KS02732	71.00	Chain Tongs 87"/2205mm, 74.5" chain, cap.4 - 18"

CUTTING AND ABRASIVE TOOLS

Files

KS02477	WOA	12"/300mm File, Flat, Bastard Cut
KS02478	WOA	12"/300mm File, Second Cut
KS01086	0.30	12"/300mm File Round, Bastard Cut, With Handle
KS01219	WOA	12"/300mm File, Square, Bastard Cut, With Handle
KS01220	0.30	12"/300mm File, Round, Second Cut, With Handle

Product Code	Wt Kg	Product Description
KS01221	0.30	12"/300mm File, Half Round, Second Cut, With Handle
KS01222	0.50	12"/300mm File, Hand, Second Cut, With Handle
KS0321A	0.23	8"/200mm File, Flat Parallel, With Handle
KS0322A	0.15	8"/200mm File, Round, With Handle



Chisels

KS02309	0.64	Flat Chisel, 7/8" Hex Body, 1" Tip, 9" long
KS02310	0.09	Flat Chisel, 7/16" Hex Body. 1/2" Tip, 6" long
KS02853	0.37	Chisel, Flat, 7/8" edge, 8"
KS02854	0.08	Chisel, Cape, 5/16" edge, 6"
KS0257A	0.36	Cold Chisel, Ribbed, 1" tip, 10"/250mm long

Saws

KS0429	0.23	Mini Hacksaw 10"/250mm
HSBM1024B	0.15	10"/250mm Hacksaw Blades (pk of 10)
KS02314A	0.57	Soft-Grip Hacksaw 12"/300mm
HSBM1224B	0.17	12"/300mm Hacksaw Blades (pk of 10)



Knives

KS02462	0.22	PowerCut Safety Knife H/Duty Auto Retract
HYJEWIND92M5	0.22	Pk10 0.9mm H/Duty Blades for Safety Knife
KS02475A	0.18	Auto-Retract Safety Knife
MARBLADE52	0.01	Pk10 0.6mm Blades for Safety Knife KS02475



Tools @ Height

Product Code	Wt Kg	Product Description
--------------	-------	---------------------

Scissors

KS0636	0.19	High Carbon, Stainless Steel 3" Scissors
--------	------	--

Scrapers

KS0206	0.20	Carbon Scraper, 1"/25mm Blade Width, 12 7/8"
KS02741	0.15	Carbon Scraper, 7/8"/22mm Blade Width, 7.5/8"
KS02742	0.23	Carbon Scraper, 1.5"/38mm Blade Width, 14"
KS02746	0.23	Striking Scraper, Heavy Duty, 0.5"/13mm Blade

Wire Brush

KS02324	0.04	Wire Brush, 3x7 Row Welders
---------	------	-----------------------------

LUBRICATION

KS0299	1.50	Grease Gun with Flexible Hose
--------	------	-------------------------------



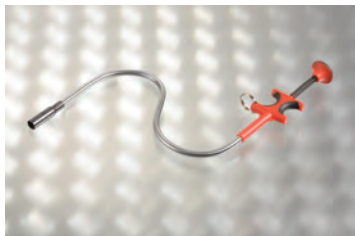
DIAGNOSTIC TOOLS

KS02323	0.32	Multi-Meter
KS02441	0.67	Fluke 87V True RMS Meter

INSPECTION TOOLS

Mirrors

KS0635	0.09	Telescopic Mirror
--------	------	-------------------



Pick-up

KS0633	0.25	24"/600mm Claw Pickup Tool
KS0634	0.25	24"/600mm Mag Pickup Tool
KS0968	0.11	Telescopic Magnetic Pickup Tool, extends 9"-34"
KS0699	0.77	10"/250mm Rectangular Magnetic Tray

Product Code	Wt Kg	Product Description
--------------	-------	---------------------

Lighting

KS0632	0.07	Penlight Flex Light, 9"/225mm FlexiProbe, Illuminates difficult to reach areas (9/32")
KS02321	0.56	4 D-Cell Maglite



KS02482	WOA	Peli Super SabreLite 3C cell
KS0363	0.25	Explosafe Torch, Zone 1&2 approved
KS0974	0.14	2AA Maglite Black
KS0978	WOA	Battery Lantern with Handle

Measuring

KS0629	0.01	6" Steel Rule
KS02855	0.02	6"/150mm Eng. Rule, Stainless Steel
KS0628	0.04	12" Steel Rule
KS02203	0.61	16ft/5m Tape Measure, Dual Marked
KS02432	0.34	3m/12ft Tape Measure Dual Marked
KS02522	WOA	8M Tape Measure Met/Imp Magnetic
KS02523	WOA	5M Tape Measure Met/Imp Magnetic
KS02193	0.40	Tape Measure Imperial 100ft
KS01174	0.25	0-6"/0-150mm Digital Vernier
KS02412	0.64	0-12"/0-300mm Digital Vernier
KS02429	0.33	0-6" Vernier, Dial Type
KS0631	0.14	Vernier Caliper 0 - 6"
KS02457	0.32	Feeler Blade Set, 25pc, 12"/300mm, Met/Imperial 0.0015" - 0.35"
KS02717	WOA	Feeler Blade Set, 25pc, 3"/75mm, Met/Imperial 0.0015" - 0.35"
KS02413	0.22	Magnetic Angle Locator



Product Code Wt Kg Product Description

POWER-SAFE 1000V Insulated Tools

Electrically Tested - Snap-on Industrial UK Power-Safe tools comply with EN60900, are tested to 10,000V

1000V Pliers/Cutters/Wire Strippers

KSo800	0.47	1000V 250mm Waterpump Pliers
KSo801	0.29	1000V 190mm Linesman Pliers
KSo810	0.53	1000V 235mm Linesman Pliers
KSo865	0.05	1000V Diag Cutters 120mm
KSo802	0.26	1000V 190mm Diag Cutters
KSo803	0.25	1000V 190mm Cable Cutters
KSo804	0.36	1000V 235mm Adjustable Pliers
KSo805	0.12	1000V 150mm Needle Nose Pliers
KSo806	0.22	1000V 90deg Bent-Nose Pliers
KSo807	0.25	1000V Wire-Stripping Pliers
KSo866	0.30	1000V Wire Stripper/Cutter/Crimper 225mm



1000V Adjustable Wrenches

KSo808	0.23	1000V 6" Adjustable Wrench
KSo809	0.35	1000V 8" Adjustable Wrench
KSo811	0.80	1000V 12" Adjustable Wrench



1000V Screwdrivers

KSo869	0.08	1000V S/DRIVER 0.5 x 3.5 x 180mm
KSo870	0.09	1000V S/DRIVER 0.8 x 4 x 180mm
KSo871	0.10	1000V S/DRIVER 1 x 5 x 180mm
KSo872	0.20	1000V S/DRIVER 1.2 x 6.5 x 250mm
KSo873	0.22	1000V S/DRIVER 1.2 x 8 x 265mm
KSo874	0.25	1000V S/DRIVER 1.6 x 10 x 325mm
KSo875	0.18	1000V S/DRIVER PH1 x 180mm
KSo876	0.23	1000V S/DRIVER PH2 x 230mm
KSo877	0.27	1000V S/DRIVER PH3 x 265mm
KSo878	0.18	1000V S/DRIVER PZ1 x 180mm
KSo879	0.23	1000V S/DRIVER PZ2 x 230mm
KSo880	0.27	1000V S/DRIVER PZ3 x 265mm



1000V Wrenches - Single Open-End

KSo827	0.09	1000V Insulated Wrench 6mm O/E
KSo828	0.09	1000V Insulated Wrench 7mm O/E
KSo829	0.10	1000V Insulated Wrench 8mm O/E
KSo830	0.10	1000V Insulated Wrench 9mm O/E
KSo831	0.11	1000V Insulated Wrench 10mm O/E
KSo832	0.12	1000V Insulated Wrench 11mm O/E
KSo833	0.13	1000V Insulated Wrench 12mm O/E

Product Code Wt Kg Product Description

POWER-SAFE 1000V Insulated Tools (con't)

1000V Wrenches - Single Open-End (con't)

KSo834	0.13	1000V Insulated Wrench 13mm O/E
KSo835	0.14	1000V Insulated WrenchH 14mm O/E
KSo836	0.15	1000V Insulated Wrench 15mm O/E
KSo837	0.19	1000V Insulated Wrench 16mm O/E
KSo838	0.19	1000V Insulated Wrench 17mm O/E
KSo839	0.21	1000V Insulated Wrench 18mm O/E
KSo840	0.21	1000V Insulated Wrench 19mm O/E



1000V Wrenches - Single Ring-End

KSo841	0.13	1000V Insulated Wrench 6mm Ring
KSo842	0.13	1000V Insulated Wrench 7mm Ring
KSo843	0.13	1000V Insulated Wrench 8mm Ring
KSo844	0.13	1000V Insulated Wrench 9mm Ring
KSo845	0.15	1000V Insulated Wrench 10mm Ring
KSo846	0.15	1000V Insulated Wrench 11mm Ring
KSo847	0.16	1000V Insulated Wrench 12mm Ring
KSo848	0.17	1000V Insulated Wrench 13mm Ring
KSo849	0.17	1000V Insulated Wrench 14mm Ring
KSo850	0.21	1000V Insulated Wrench 15mm Ring
KSo851	0.24	1000V Insulated Wrench 16mm Ring
KSo852	0.25	1000V Insulated Wrench 17mm Ring
KSo853	0.28	1000V Insulated Wrench 18mm Ring
KSo854	0.29	1000V Insulated Wrench 19mm Ring

1000V T-Bar Hex Drivers

KSo855	0.17	1000V Insulated T-Bar Hex Key 3mm
KSo856	0.19	1000V Insulated T-Bar Hex Key 4mm
KSo857	0.26	1000V Insulated T-Bar Hex Key 5mm
KSo858	0.25	1000V Insulated T-Bar Hex Key 6mm
KSo859	0.40	1000V Insulated T-Bar Hex Key 8mm
KSo860	0.43	1000V Insulated T-Bar Hex Key 10mm

Product Code	Wt Kg	Product Description
--------------	-------	---------------------

Other 1000V Tools

KSo861	0.84	1000V Insulated Hammer, 200GR, Nylon Faces (linterchageable)
KSo862	0.81	1000V Insulated Hacksaw 12"
KSo863	0.25	1000V Insulated Junior Hacksaw
KSo864	0.00	1000V Insulated Knife

Customer Support

We can help you select the right Tools@Height products and advise on the best way to use and maintain them.

In accordance with our Continuous Improvement Programme, all Snap-on Industrial products are regularly reviewed and, if necessary, updated to ensure optimum quality, reliability and safety.

Feedback from our customers is very important to us so we welcome all comments and suggestions you may have.

Tel: **+44 (0)1536 413 904**
FAX: **+44 (0)1536 413 874**
Email: **tah@snapon.com**
Web: **www.snapon.com/industrialuk**



Tools @ Height

Notes



Snap-on Industrial
38A Telford Way Industrial Estate
Telford Way
Kettering
Northamptonshire
NN16 8UN
Tel: +44 (0)1536 413904
Fax: +44 (0)1536 413874
Email: tah@snapon.com
www.snapon.com/industrialuk



Snap-on are an environmentally aware company
Printed on an FSC certified mixed source and elemental chlorine free material
© Snap-on Holdings UK Ltd 2011